



OTAMERICA

Sustainability Report
2022



Sustainable Tank Storage Solutions

around Latin America



INTRODUCTION 04

2022 highlights
Message from the CEO

COMPANY PROFILE 08

Who we are

SUSTAINABILITY & ESG STRATEGY 12

Sustainability strategy ESG commitments
Our contribution to our focused SDGs
Materiality and Stakeholders

ENVIRONMENTAL STEWARSHIP 16

Process safety and spill prevention
Energy saving and climate protection
Water and wastewater management
Waste management
Biodiversity

SOCIAL 28

Our Employment
Occupational health and safety
Caring about communities

GOVERNANCE 46

Corporate governance
Ethics and compliance
Risk Management
Economic value

ABOUT THIS REPORT 55

ANNEXES 57

GRI content index
Glossary
Our terminals

INTRODUCTION

COMPANY PROFILE

SUSTAINABILITY
& ESG STRATEGY

ENVIRONMENT
STEWARSHIP

SOCIAL

GOVERNANCE

ABOUT THIS REPORT

ANNEXES

INTRODUCTION



INTRODUCTION

COMPANY PROFILE

SUSTAINABILITY & ESG STRATEGY

ENVIRONMENT STEWARSHIP

SOCIAL

GOVERNANCE

ABOUT THIS REPORT

ANNEXES

Oiltanking GmbH (Oiltanking) has provided tank storage solutions and services to customers worldwide since 1972. Its holding company Marquard & Bahls (M&B) has delivered consolidated sustainability reporting for its portfolio companies since 2011.

In November 2021, Oiltanking announced major changes aimed at accelerating growth and supporting its customers and partners with their sustainability ambitions.

The aim behind this restructuring was to increase value for its stakeholders, drive an ambitious ESG agenda, including the reduction of Oiltanking’s carbon footprint, and work with partners and customers towards a more sustainable world.

These changes enabled each business to focus on its core business strategies to better meet evolving customer needs against a backdrop of escalating climate change challenges.

Climate change is evident, and Oiltanking is taking the resulting challenges seriously. The energy industry needs to evolve to help create a climate-safer world. Oiltanking aims to be a frontrunner in enabling the industry to recalibrate and proactively support its partners achieving their sustainability ambitions.

To meet those ambitions, Oiltanking has accelerated its 2025 strategy and sharpened its focus by creating two new fully standalone Business Units, of

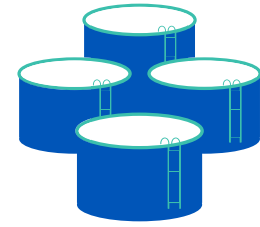
which one is OTAMERICA. This strategy aims to maximize Oiltanking’s growth potential in the Latin America region. Holger Donath leads this business region since 2013. With nearly 30 years with Oiltanking, Holger has extensive knowledge and experience of the industry, the Latin America region, and its growth potential.

As partner of choice for its customers and suppliers, OTAMERICA is committed to continue operating at its usual high standards, with safety, reliability of operations, and care of people and the environment being its guiding principles.

Our 2022 Sustainability Report reflects OTAMERICA’s overall strategy, with six focus areas that shall mark our progress towards our sustainable growth strategy. We report on our KPIs and share stories for the entire OTAMERICA portfolio.

2022 HIGHLIGHTS

15 terminal operations in 6 countries*



2.99
(MJ/ throughput t)
Energy intensity ratio



0.499 Total
Recordable Injuries (TRI) Rate
Including employees, contractors and subcontractors per 1 million work hours

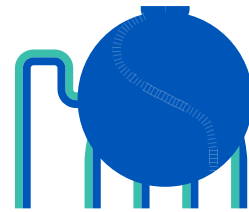
+ 1.8 million
CBM STORAGE CAPACITY*

0.22
(kCO2e/throughput t)
Emissions intensity ratio

50.86
hours/employee
Annual average of HSSE training

422 EMPLOYEES
17% women
83% men

+50 million tons throughput handled



17%
femal executives



NO
CORRUPTION CASES



No fires or product contaminations



+14.8% Revenues
+7.5% EBITDA



2,853
suppliers
(98.1% local)

Notes:

* 15 terminals including Brandsen, which operated with OTAMERICA until August 31, 2022.

Includes terminals that are operated and managed 100% by OTAMERICA, terminals of the joint venture with TDP (Callao, Supe, Salaverry, Chimbote and Eten) that are operated by our joint venture partner Unna Energy, and Puerto Bahia terminal in Cartagena, which is operated by Sociedad Portuaria Puerto Bahía.

MESSAGE FROM THE CEO

GRI 2-22

Dear readers,

The constant changes of recent years have had a significant global impact on people, societies and economies. Moreover, our industry is complex and is at the center of this process.

Our company will only succeed through close collaboration with all industry players. By combining capabilities, sharing risks, and pursuing opportunities together, OTAMERICA will place truly transformative partnerships at the forefront of our business strategy.

Today, our company decides to transform itself and evolve. We are undertaking a transition that aims to position OTAMERICA as the preferred partner in energy logistics in Latin America, focusing on operational excellence, leadership in safety, environmental protection and our employees, our most important asset.

Our first ESG Report 2022, autonomous from our Oiltanking GmbH and M&B AG holdings, reflects that we are transforming to accelerate growth and focus more strongly on new energies, gases, and chemicals to increase their evolution, while keeping our existing business strong.

Our commitment with sustainability is crucial and mandatory. We will continue developing, innovating, building, and operating storage infrastructure to provide our customers and partners with a reliable supply and make it possible for them to advance their growth and energy transition ambitions.

Our 14 terminals in Latin America provide the safe and reliable storage solutions needed to ensure energy security. We will focus our business strategies on effectively meeting the changing needs of customers in a context of increasing climate change and energy transition challenges. We will continue maximizing the efficiency and reducing the environmental impact of these existing assets, delivering value for all stakeholders involved. Over time, as we continue to deliver on our strategy, our terminals will develop and transition, lowering their emissions and becoming fit for a future of cleaner energy.

I am very pleased and proud of all our collaborators. I would like to thank each one of them for their dedication, commitment, and daily effort.

Our new slogan "Connecting energies" represents our ability to receive, care for, facilitate, and build bridges to make it possible for energy to reach those who need it efficiently



and safely. Additionally, it symbolizes the bond of our energy as a corporate citizen with the energy of our customers, focusing on environmental protection and sustainable growth.

More is to follow. Stay connected and keep an eye on OTAMERICA.

Best wishes,
Holger Donath
CEO OTAMERICA



INTRODUCTION

COMPANY PROFILE

SUSTAINABILITY
& ESG STRATEGY

ENVIRONMENT
STEWARSHIP

SOCIAL

GOVERNANCE

ABOUT THIS REPORT

ANNEXES

COMPANY PROFILE

WHO WE ARE

GRI 2-6

OTAMERICA is an active, independent provider of logistics services to the oil chemical and gas industries, specializing in tank terminals and associated services. Our focus is on high service quality, and the construction and operation of tank terminals.

In our tank terminals, we store and handle various products, including crude oil, petroleum products, biofuels, gases, and chemicals. We have been successful in the tank storage business in Latin America since 1994, when we made our first investment in Oiltanking Ebytem S.A. in Argentina.

With offices in Argentina, Brazil, Peru and Mexico, we have 14 terminals across six countries in Latin America. With this strong presence, our tank terminal network offers the highest quality of service to our customers, a deep market and product knowledge, and efficient and safe operations, while caring for the environment and people.

Our vision is to be the preferred partner in energy logistics in Latin America.

We often develop and operate our business with reputable local public and private companies, in which case OTAMERICA acts as the operating partner of the joint venture. When constructing terminal facilities that require significant investments, either independently or with major local partners, the financial strength of our parent company, Oiltanking GmbH is a valuable resource.

To continue enhancing the value we offer to our shareholders, we maintain a strategy of controlled growth of our network of tank terminal services through acquisitions, new constructions, and the expansion of existing facilities.

Our mission is to achieve outstanding sustainability performance and create added value for our employees, our shareholders, and society at large, while protecting the environment.



Company	Terminal
🔴 Oiltanking Argentina Ebytem S.A.	Puerto Rosales
🔴 Oiltanking Argentina Ebytem S.A.	Brandsen*
🟢 Oiltanking Açú Serviços Ltda.	Açú Petroleo
🔴 Oiltanking Terminais Ltda.	Vitória
🔴 Oiltanking Colombia S.A.	Cartagena
🟢 Oiltanking Colombia S.A.	Puerto Bahía
🟢 Oiltanking México, S. de R.L. de C.V.	Tuxpan
🔴 Colon Oil and Services S.A.	COASSA
🔴 Logística de Químicos del Sur S.A.C.	Matarani
🟢 Oilanking Andina Services S.A.C.	Pisco
🟡 Terminales del Perú	Callao
🟡 Terminales del Perú	Eten
🟡 Terminales del Perú	Chimbote
🟡 Terminales del Perú	Supe
🟡 Terminales del Perú	Salaverry

🔴 Controlled and operated by OTAMERICA

🟡 Operated by business partner (Joint venture with UNNA Energia)

🟢 O&M Management contract

* Brandsen operated under OTAMERICA until August 31, 2022

See [Our terminals Annex](#) for more details



OTAMERICA at a glance:

- 1994** Oiltanking Argentina S.A. acquisition of 51 % of EBYTEM S.A.
- 1998** Oiltanking Peru - 50/50 Consortium (CT) incorporation with local partner and subsequent signature of Operations Agreement with PetroPerú of 9 Terminals operated by partner.
- 2002** Start up of Brandsen Terminal and 170 km pipeline to supply crude oil to Campana Refinery.
- 2004** Oiltanking Peru - Operation Pisco Camisea marine platform.
- 2007** Oiltanking Peru - Matarani Terminal start up.
- 2008** Oiltanking Brazil - Vitória Terminal Phase 1 commissioning (35,200 cbm) 75% GmbH.
- 2008** Oiltanking Colombia - OTCOL incorporation and acquisition of a 9,000 cbm terminal from Dow Chemical.
- 2009** Start up of 40 km pipeline to supply crude oil from Puerto Rosales Terminal to Bahía Blanca Refinery.
- 2011** Oiltanking Panama - Operation started.
- 2014** Oiltanking Peru - 50/50 Consortium (TDP) incorporation. All terminals retendered. Take over Callao, 4 northern won. Southern terminals kept as CT. Contract renewal.
- 2015** Oiltanking Colombia - OTSER incorporation of and operation company and signing of O&M Contract with Puerto Bahía.
- 2016** Oiltanking Brazil - OT Açú Services: T-Oil ship to ship operations start.
- 2018** Oiltanking Mexico - Start of Tuxpan Construction.
- 2021** OTAMERICA- Oiltanking announced a major transformation program called "Accelerate" with the creation of new Business Units launched to leverage growth in diverging markets: OTAMERICA and Advario.
- 2022** Oiltanking Ebytem concession renewal until 2037 - Puerto Rosales Major Expansion project with 6 new tanks, totalizing 300,000 cbm and new jetty facilities to start operation in 2024.

Our services

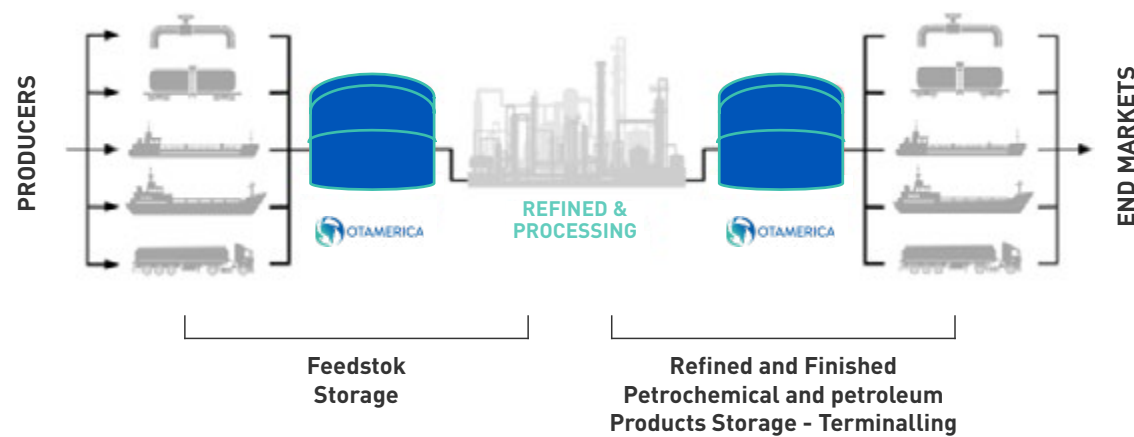
At OTAMERICA, we are strongly customer-oriented and offer customized infrastructure. We provide services in the field of tank storage logistics of various products, including crude oil, petroleum derivatives, biofuels, gases, and chemicals. We do not own the stored products. Our customers include private and state-owned oil companies, refineries, petrochemical companies, mining companies and operators of petroleum and chemical products.

Our priority is to provide safe, efficient, and reliable services in the construction and management of our facilities.

Business areas:

- **Chemical Product Storage** (2 terminals; Peru and Colombia)
- **Gas Storage** (2 terminals; Peru)
- **Oil Storage** (3 terminals; Argentina, Brazil, and Colombia)
- **Other Liquid Storage** (10 terminals; Brazil, Colombia, Mexico, Panama, Peru)

We aim to be the independent logistics service partner of choice



More than 1,800,000 cbm storage capacity

Capacity (cbm) *	2022
Persistent oils	709,692
Other Petroleum Products, Fuel Oil, Jet Fuel, Biofuels	1,121,909
Chemicals	45,914
Gases	8,938
TOTAL	1,886,453

*Brandsen operated under OTAMERICA until August 31, 2022 – On September 1, after 20 years of successful operation by OTAMERICA under a BOOT agreement, the assets were transferred to Axion (formerly ExxonMobil) Under an O&M agreement, OTPB was fully operated by OTAMERICA for 6 years until Feb 28, 2021. Since then, OTAMERICA and Sociedad Portuaria Puerto Bahía have entered into an Operations and Maintenance Management contract to provide management services in 4 main areas of the terminal: Operations, HSE, Engineering and Maintenance.

*Tank capacity is given as shell capacity including stop and additive tanks and excluding fire water tanks. Data related to the 14 terminals including JVs and Puerto Bahía.

The throughput tons, the number of vessels, barges, trucks and rail cars handled are important indicators of the operating activities. In 2022, we registered an increase of 15.5% in the total throughput compared to the previous year.

+50 million tons throughput handled in 2022

Operational performance (throughput / tons by year)	2022	2021
Persistent oils	44,707,672	38,945,021
Other Petroleum Products, Fuel Oil, Jet Fuel, Biofuels	5,151,033	3,982,919
Chemicals	188,073	397,610
Gases	877,505	770,726
TOTAL	50,924,283	44,096,276

Throughput calculated based on incoming product, including ship-to-ship transfers as well as other direct transfers carried out through our pipelines. (Only for the terminals where OTAMERICA has full operational control)

Operational performance (transfers by year)	2022	2021
Vessels	844	749
Barges	201	565
Trucks	118,007	105,031
Rail Cars	97	0



INTRODUCTION

COMPANY PROFILE

SUSTAINABILITY
& ESG STRATEGY

ENVIRONMENT
STEWARSHIP

SOCIAL

GOVERNANCE

ABOUT THIS REPORT

ANNEXES

SUSTAINABILITY & ESG STRATEGY

SUSTAINABILITY STRATEGY AND ESG COMMITMENTS

GRI 2-23

Our purpose is to achieve sustainable growth by expanding our existing facilities, building new terminals, and making acquisitions in markets that show continuous growth in the areas of petroleum derivatives, chemical and petrochemical products, and refrigerated gases.

By ensuring outstanding sustainability performance, we aim to create added value for our employees, our shareholders, as well as society at large, while protecting the environment. As a family company, this principle is particularly important to us and guides our decisions.

We put our values into action, integrating the principles of sustainable development across our entire value chain, and encourage our employees to participate in them.

We promote an entrepreneurial spirit with a decentralized management structure and foster a problem-solving attitude by empowering our employees to make the right decisions. We care about our teams and help them develop the necessary skills and capabilities, offering ongoing training for the best possible results.

In 2022, we defined our Sustainability Strategy and approved OTAMERICA ESG 2030 roadmap.

In addition, we designed a new database to collect sustainability data and decided to publish our first sustainability report.

Our focus

- **Operational Excellence.** We seek continuous improvement in assets and workflows through collaboration and idea exchange with internal and external stakeholders to deliver value to all.
- **Safety Leadership.** We are firmly committed to safety and efficiency in all our business activities. Our goal is to prevent all accidents, injuries, and occupational illnesses.
- **Environmental Protection.** We do our utmost best to protect the planet while conducting our business activities and are committed to minimizing our environmental footprint.
- **Human Resources.** Our industry requires a wide range of qualifications, skills, and technical knowledge, and OTAMERICA's workforce is made up of the best professionals. Given the constant evolution of our work environment, markets, and technology, acquiring new knowledge is crucial, so we offer our employees suitable training programs.

Our actions areas and commitments

Live up to our motto "Connecting energies" and make a positive difference for our local communities.

Make sustainability an integral part of our business supported by strategic decisions that meet our stakeholders' demands.

Conduct all business activities in a safe and efficient manner and to prevent all accidents, injuries and occupational illness.



Get the company fit for the future with a sharp eye on existing markets and open to new business areas.

Become a magnet for motivated and talented employees who value fairness and diversity.

Become a pioneer in tank storage and logistics by following a clear strategy that minimizes our environmental footprint and protects our planet.

OUR CONTRIBUTION TO OUR FOCUSED SDG

As part of our ESG 2022 roadmap, we identified 8 Sustainable Development Goals, to which, at OTAMERICA, we can contribute to a greater extent.

Our strategy fosters human development and eight SDGs



We relentlessly strive to ensure healthy lives and promote well-being for all at all ages by our corporate citizenship engagement in the areas of health. We want to help improve the living conditions and health care of people in the countries where we operate by supporting community-based programs and projects that address health and primary care shortages, as well as health campaigns that promote hygiene behavior, healthy nutrition, and disease prevention.



We strive to ensure inclusive and equitable quality education and promote lifelong learning opportunities for all through our corporate citizenship engagement in the area of education. We especially want to help socially disadvantaged children and young people to achieve an appropriate level of education and support educational programs and institutions in those countries in which we operate.



We support the energy transition by looking at more business activities on chemicals and gases. We intend to become an active participant in the energy transition. Through the services of our business in tank storage and logistics, we create reliable access to energy while conducting these operations in the most environmentally friendly way.



We promote sustained, inclusive, and sustainable economic growth, and productive employment and decent work, by creating safe jobs, and investing in infrastructure in many places in America. Occupational health & safety have the highest priority in all our activities. We aim to be a fair and preferred employer and want to offer our employees a diverse and healthy work environment.



To build resilient infrastructure, promote inclusive and sustainable industrialization and foster innovation, our affiliates develop and operate reliable, sustainable assets in six countries in the region. We explore the introduction of more sustainable technologies and processes while accelerating opportunities for innovation.



We aim to ensure sustainable consumption and production patterns that minimize our negative impact on the environment as much as possible and include sustainability aspects in our core activities. We offer our customers environmental-friendly solutions.



We take urgent action to combat climate change and its impacts, we aim to be a company that is environmentally friendly in the context of our business activities. One that minimizes its negative impact on the environment as much as possible.



To conserve and sustainably use the oceans, seas and marine resources for sustainable development, we always strive to prevent product releases, and minimize our environmental footprint.

MATERIALITY AND STAKEHOLDERS

List of material issues

GRI 3-1, 3-2

A materiality assessment is relevant to defining a complete sustainability strategy that addresses concerns and expectations of internal and external stakeholders. We conducted an internal materiality assessment based on sustainability priorities for Oiltanking GmbH and we have also benchmarked it with peer materiality assessments to make sure all key issues that relate to our industry were included.

As part of our strategic definitions, we defined the following topics as material to our operations:

E	S	G
<ul style="list-style-type: none"> • Climate adaptation, resilience and transition • GHG emissions • Supplier environmental assessment • Air emissions • Waste • Water and effluents • Biodiversity • Asset integrity and critical incident 	<ul style="list-style-type: none"> • Occupational health and safety • Local communities • Employment practices • Non-discrimination and equal opportunity 	<ul style="list-style-type: none"> • Economic impacts • Freedom of association and collective bargaining • Anti-corruption • Non competitive behavior

Stakeholders and partnerships

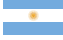
GRI 2-28, 2-29


We maintain a fluid dialogue with the most relevant stakeholder groups for our organization. To do so, we use a wide range of communication tools, such as the intranet, the corporate website, emails, phone, and in-person meetings with:

- Government authorities
- Industry chambers
- Academia
- Suppliers and customers
- Employees
- Labor unions
- Media
- Local communities
- Banks
- Unions
- Shareholders

We believe in building partnerships and aspire to be the preferred associate in energy logistics in Latin America, focusing on operational excellence, leadership in safety, environmental protection, and our employees, our most important asset.


The following are institutions with which we engage through monetary contributions, maintain partnerships, or actively collaborate through our work:


-  **ARGENTINA**
- UCIAPA, Union of Commerce, Industry and Agriculture of Punta Alta
 - IRAM, Argentine Institute for Standardization and Certification
 - FUNDECE, Foundation for Quality and Excellence
 - IAPG, Argentine Institute of Oil and Gas

-  **COLOMBIA**
- ANDI, National Association of Entrepreneurs of Colombia
 - Traso Collective Foundation: Social Transformation Collective
 - MINTIC, Information and Communications Technology Fund

-  **BRAZIL**
- ABTL, Brazilian Association of Liquid Terminals
 - German-Brazilian Chamber of Commerce

-  **PANAMA**
- Maritime Chamber of Panama
 - MIDES, Ministry of Social Development
 - Ministry of Environment
 - Lions Club of Colón

-  **PERU**
- National Society of Mining, Petroleum, and Energy
 - AHK Peru, Peruvian-German Chamber of Commerce and Industry

-  **MEXICO**
- ASEA, Safety, Energy, and Environment Agency.
 - SEDEMA, Secretariat of the Environment.
 - CONAGUA, National Water Commission.

- REGIONAL**
- OCIMF, Oil Companies International Marine Forum
 - SLOM, Latin American Society of Operators of Maritime Oil Terminals and Single Point Moorings
 - APLA, Latin American Petrochemical and Chemical Association

INTRODUCTION

COMPANY PROFILE

SUSTAINABILITY
& ESG STRATEGY

ENVIRONMENT
STEWARDSHIP

SOCIAL

GOVERNANCE

ABOUT THIS REPORT

ANNEXES

ENVIRONMENTAL STEWARDSHIP

GRI 3-3

We are committed to protecting the environment and reducing environmental impacts to the greatest extent possible.

It is important to recognize that any operation involving hazardous materials can potentially have an environmental impact. Possible risks encompass the release of product vapors into the air, greenhouse gas emissions resulting from operations, and the accidental spills of products or additives that could lead to soil, groundwater, and surface water contamination.

To address this, our approach involves the use of the best available technology and operational practices, along with effective preventive measures, to minimize the potential for damage to the environment, people and assets.

It is our responsibility to significantly reduce this risk through the implementation of preventive safety measures. Environmental issues are, therefore, an integral part of the HSSE management system in all companies within our group. In accordance with the HSSE Policy, we endeavor to use energy and resources efficiently and promote environmental awareness among employees to reduce harmful effects on the environment. To identify energy-saving opportunities and take steps to improve energy efficiency, local activities in our tank terminals are conducted following our detailed Energy Saving Guide.

As a preventive measure under the HSSE management system, we also regularly monitor the quality of groundwater at our tank terminals. The data collected is evaluated by our environmental experts.

In addition, we regularly monitor air quality, ambient noise, groundwater, and surface water.

In the event of a product spill, our primary focus is to minimize environmental impact and promptly initiate an effective remediation process.

We operate in compliance with environmental and local regulations and aligned with international standards, such as ISO 14001. Also, each of our terminals undergoes internal audits and hazard identification and risk assessment processes.

Our targets

- Reduce the relative energy consumption in our business activities
- Accelerate a low-carbon economy with the aim of reducing our relative carbon emissions.
- Aim towards a circular economy for waste and water management by improving our systems and processes in place.

PROCESS SAFETY AND SPILL PREVENTION

GRI 3-3, 306-3 (2016)

We are committed to managing our operations and ensuring asset integrity in a responsible and sustainable manner.

As a company that handles hazardous materials, we place the highest priority on preventing loss of primary containment (LOPC - or simplified: spill). At OTAMERICA, we minimize the risk of spills by means of state-of-the-art facilities, efficient workflows combined with preventive maintenance programs and employee awareness. Also, if product releases nevertheless occur, do our utmost to ensure that the environmental impact is eliminated and efficient remediation is initiated.

Key 2022 achievements



No fires

No product
contaminations

As part of our commitment with process safety and spill prevention, our target is to cause zero environmental impact due to spilled products. For achieving this goal we include spills KPIs in Individual Development Plans of the management and/or in bonus systems.

0 ENVIRONMENTAL IMPACT

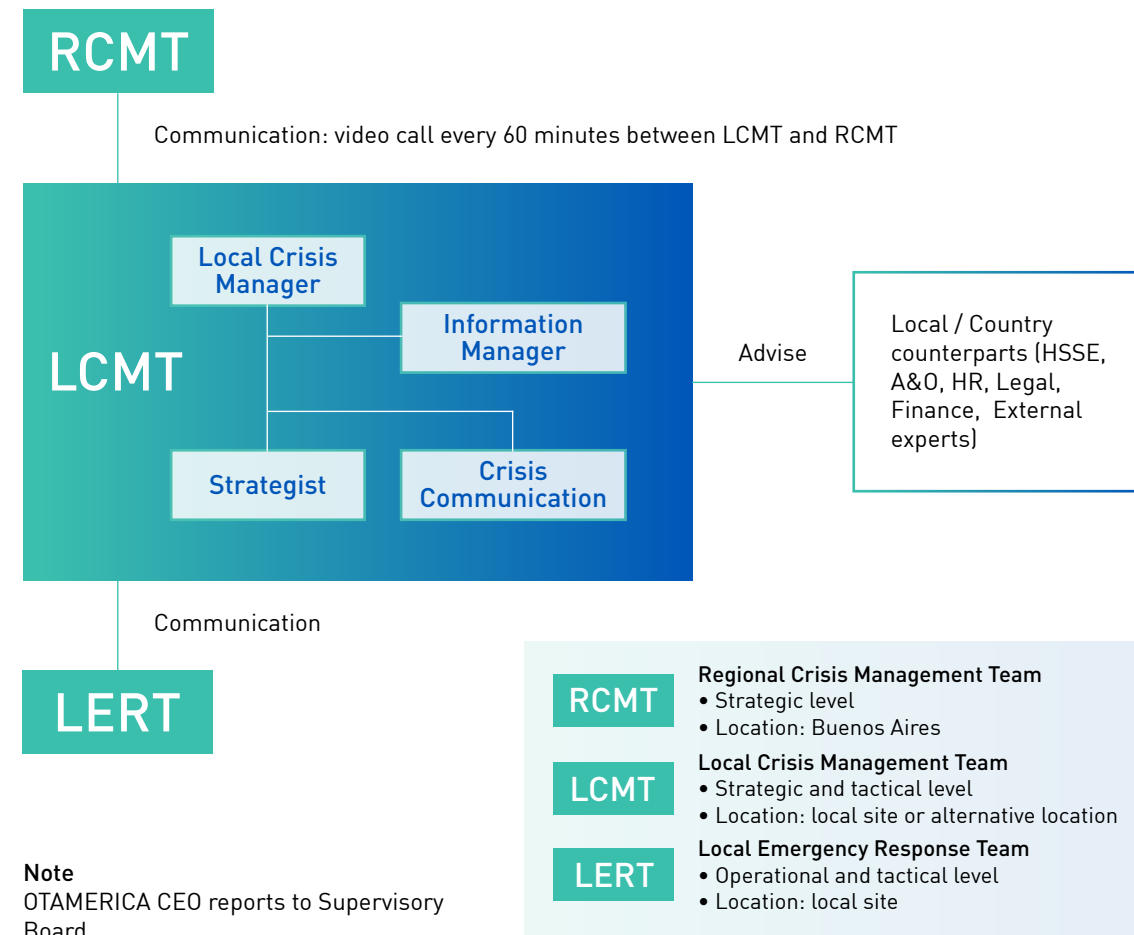
Achieve Target Zero: Cause zero environmental impact due to spilled products

Main ongoing actions

- **Risk management:** All terminal HAZID (Hazard Identification) reports have been reviewed. Data compiled in a centralized database to track actions related to high or medium-high risks scenarios.
- **HAZOP (Hazardous Operation) study reviews at all terminals.**
- **Integrated terminal audits completed at 4 terminals by Dec 2022 and other 3 will be conducted in 2023.**
- **Contractor Safety Forum held at all terminals.**
- **All 2022 RCAs (Root Cause Analysis), both mandatory and voluntary were completed.**
- **HSSE policy:** Safety, Health and Environment are part of OTAMERICA's value system and are integral to our business. We are committed to managing our operations and ensuring asset integrity in a responsible and sustainable manner. We strive for operational excellence and exemplary HSSE performance. We aim to safeguard the people who work with us and the communities we operate in, through rigorous compliance with all applicable laws and regulations. The effective application of our Management Systems and associated processes enables us to be a reliable partner for our stakeholders and to sustainably grow the business.
- **Our risk management policy describes the principles, framework and process for risk management at OTAMERICA. Risk management is an inherent part of our business and is part of all associated operational/**

project activities in order to manage any potential impact on People, Environment, Asset and Reputation (PEAR), including financial losses throughout the life cycle of a facility. This reflects our focus to protect our employees and contractors as well as the community that could be affected by our operations.

- **Hazard identification is the first step of the risk assessment process.** It is carried out for the first time during the project design phase and revalidated or updated throughout its entire life cycle, as part of Management of Change System, e.g. original designs may evolve during further project development, or changing process/working conditions or nature of activities may arise during the operations and maintenance phase. As part of OTAMERICA's long-term objectives to excel our HSSE & OPERATIONAL PERFORMANCE, incident prevention is crucial. We must have a clear understanding of the root causes of incidents and learn from them to prevent recurrence.
- **Strong and effective emergency and crisis leadership requires the definition of clear roles and responsibilities at all levels within the organization.** For that, we have our own emergency response and crisis management setup.



Environmental Remediation

When a spill of hazardous material occurs, there is always a risk of soil and/or groundwater contamination depending on the product viscosity, the surface condition and the geology. Therefore, we apply effective recovery and remediation measures. Depending on the impacted area, the depth of the soil contamination and the facilities in the area, immediate excavation of the contaminated soil is usually the most effective measure.

When remediation is required, we have the internal and external expertise to assess the extent of the contamination, remediate it, and manage the process to completion.

It is also worth mentioning that excavated contaminated soil is hazardous waste, so it is handled and disposed of in accordance with legal regulations.

Ocean protection

Oil Spill Response Limited



To ensure guaranteed and professional support in case of tier-3 oil spills, M&B became a shareholder in Oil Spill Response Limited (OSRL) as of January 1, 2005. OSRL is the world's largest oil spill response company. The non-profit organization was founded in 1984 and is wholly owned by 29 international oil companies.

The service provided covers everything from simple advice and supervision to full-fledged spill response intervention on a 24 h and 365-day basis. To this end, the alliance has teams on call with pre-packed equipment and guaranteed access to two Hercules aircraft. The equipment includes various booms, skimmers and pumps as well as ships, trucks, vehicles and dispersant systems. As a subsidiary of a shareholder, OTAMERICA is allowed to nominate OSRL as the official tier-3 responder, with a guaranteed response.

OSRL offers various oil spill response courses as well as tailor-made training sessions. The consultancy team provides a wide range of oil spill contingency planning, modeling, and auditing.

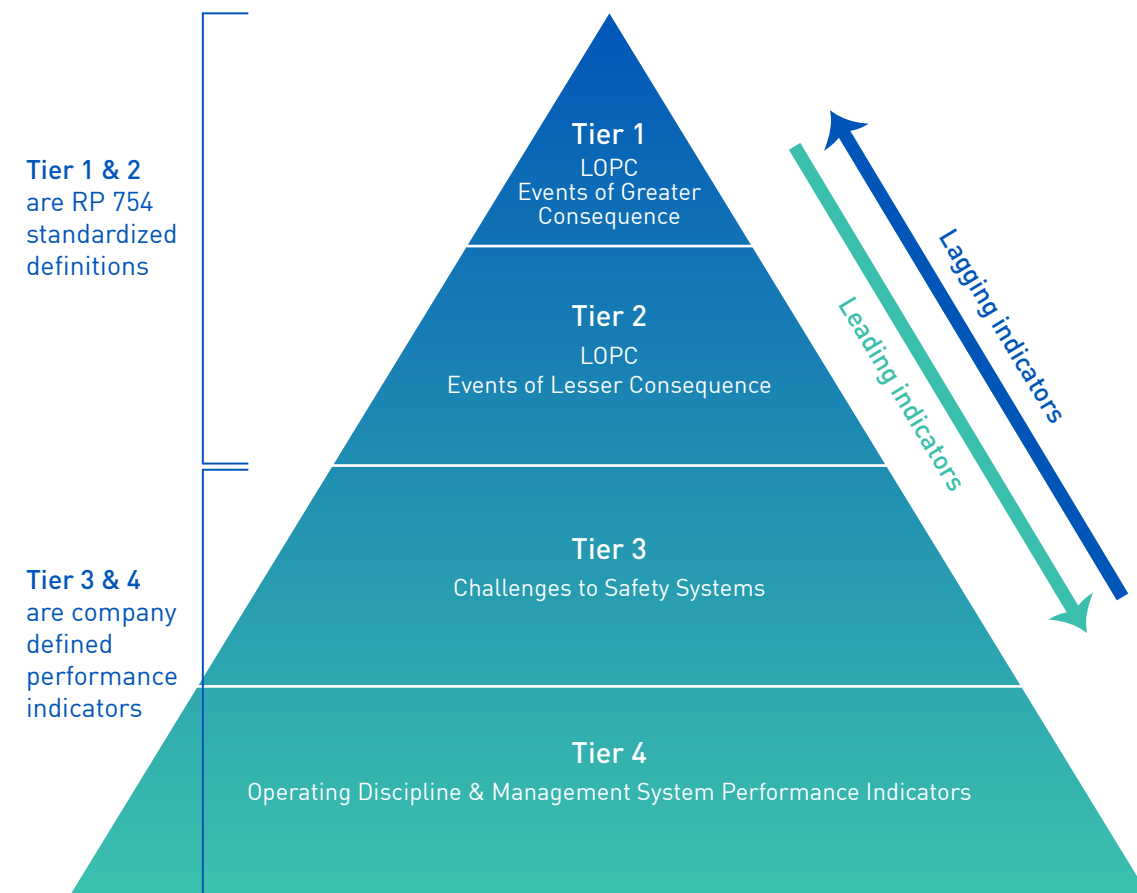
Every two years, at the marine platform in Paracas that we operate, OTAS hosts a training session for our employees from Peru and the rest

of the region, as well as key stakeholders. The three-day training course includes the mobilization of people and equipment to contain a marine spill and the formation of a crisis team to exercise the response to potential scenario of an impact at sea.

Our performance

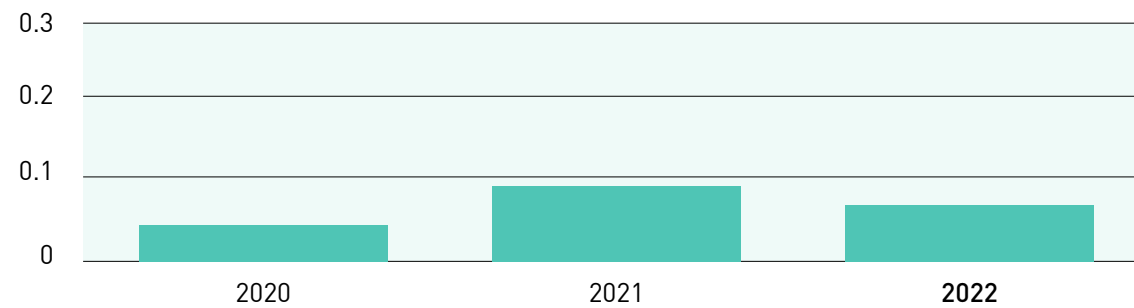
Incident report and classification are main steps of our incident management process. Any incident within a process installation that results in a reportable injury, hospital admission, fire, explosion, officially declared shelter-in-place situation, significant material damage, or the release of chemical substances exceeding specified thresholds is categorized as a process safety event.

We use globally recognized API Recommended Practice (RP) 754 (2016), titled "Process Safety Performance Indicator for the Refining and Petrochemical Industries"; to classify all process safety events. For tracking process safety performance, we use our internal standard, Process Safety Incident (PSI) and also the Process Safety Events (PSE), as defined in API RP 754, as monitoring parameters.



In the case of spills and leaks, in oil and gas industry, they are commonly designated as Losses of Primary Containment (LOPC). According to our internal criteria, spills exceeding 0.1 cubic meters in volume are deemed KPI-relevant, while all product leaks, regardless of their volume, are reported internally and subjected to investigation.

Loss of Primary Containment (LOPC) Rate



Product release ≥ 0.1m³, excl. third party pipeline damages per 1 million t throughput.

Process safety events (API 754)	2022	2021
Tier 1	1	2
Tier 2	3	2

- 3 LOPCs (>100 liters) during 2022 - Full RCAs (Root Cause Analysis) conducted and reviewed with the Functional VPs (HSSE and Asset & Operations). All spills contained in secondary containments, no environmental impact. All under 1m3. No injuries associated.
- 1 LOPC 8 m³ - out of containment - contained in tank farm, surface soil slightly impacted (removed and replaced). No injuries associated. Full RCA conducted and reviewed Functional VPs. Lessons learned from these incidents are shared with terminals in the region.

Process Safety Events Rate (PSE-R)



Incident investigation - BSCAT as OTAMERICA standard RCA method

We use the BSCAT system for Root Cause Analysis of Incidents, highly developed in the industry.

BSCAT helps to depict an incident in a simplistic sequential manner, emphasizing the root causes that led to loss of control over a hazard and which barriers were supposed to be in place and functioning correctly.

Employees are trained to carry out the analysis effectively and objectively, avoiding blaming the worker and carrying out a more systemic approach in which incidents related to shortcomings in management systems can be detected.

Lessons learned are issued after a RCA is completed and the actions are implemented by the terminals, where applicable.

Overfill protection

On December 11 2005, several explosions at the Buncefield Oil Storage Depot (United Kingdom) caused one of the biggest fire incidents known for a terminal facility around the globe. The fire affected a total of 23 large storage tanks and took several days to extinguish .

It was determined that one of the causes of the incident was the overflow of a storage tank.

The incident investigation also concluded that the failure of the overfill protection system, specifically the absence of a functioning high-level alarm on the tank that eventually overfilled, was one of the contributing factors.

Taking this incident and its consequences into account, the industry has invested time and effort in translating all lessons learned into documents such as “API 2350 – Overfill Protection for Storage Tanks in Petroleum Facilities”.

International guidelines and criteria defined in API 2350 4th Edition, internal Overfill Protection Memorandums of Oiltanking issued in 2007 and 2010, as well as field experience gained over the last decade led to the development of a new Oiltanking Tank Overfill Protection Standard.

As stated in the Standard, all our terminals have defined their different Levels of Concern (LOC) for each tank (AOPS Level when applicable) and have installed level sensors (radar) and independent switches (High-High Level Alarm) that trigger the manual overfill prevention.

Fire protection

Past incidents in our industry have shown that technical measures, organizational processes, and rules are not always sufficient to prevent fires. That is why it is very important to us to increase our staff’s risk awareness and to ensure a quick response to emergency situations by performing regular drills.

At OTAMERICA, we follow a mandatory Fire Protection Standard consisting of company-wide minimum requirements that often go beyond legal requirements.

This also includes the general layout of the site, the availability of foam and water, detection systems, mobile equipment as well as skills and training of staff.

Most of the described requirements are based on internationally accepted codes and are already implemented in existing OTAMERICA documents.

Training & Exercises

In OTAMERICA, all mandatory trainings are carried out and we have a plan of exercises, drills, and training that are carried out in all terminals. Some of those examples below:

OTAMERICA México carried out the national drill at the Tuxpan Veracruz terminal where +130 people participated, including administrative, operational and contractor personnel.

The objective of this action was to test the efficiency of the internal civil protection plan and the preparation for emergency response in the evacuation procedure, in addition to creating and encouraging response habits to mitigate risks.





At COASSA, we have conducted firefighting training for our brigade personnel, with the objective of keeping them trained to give a first response in the event of a fire in our terminal, both in the operational and administrative areas. To ensure that personnel are familiar with the operation of firefighting equipment, such as monitors and pumps, and the foam performance at the time of activation. It also tests the time it takes to don firefighting suits and self-contained breathing apparatus.

Pisco terminal in Perú carried out the "Practice of deployment of contingency equipment in case of hydrocarbon spill to the sea", with the support and coordination of OSRL experts and 67 participants from Oiltanking, Terminales del Peru, Cosmos and PlusPetrol Peru. The objective of this training, developed in accordance with international standards, was to build a solid base of knowledge and skills to act professionally in emergencies.



ENERGY SAVING AND CLIMATE PROTECTION

GRI 3-3, 302-1, 302-3, 302-4, 305-1, 305-2, 305-4, 305-5

Our company uses both direct and indirect sources of energy in its offices and for the operation of its facilities, works, and vehicles. Direct energy consumption includes natural gas, diesel, gasoline, fuel.

Indirect energy (mainly electricity) is used for various purposes, such as product pumping, lighting our tank terminals, and equally importantly, for the computer equipment in our offices.

The most energy-consuming activity is the pumping carried out at the tank terminals.

In order to identify energy-saving opportunities and take steps to improve energy efficiency, local activities can use our Energy Saving Guide as a reference.

Energy consumption	2022	2021
Gas (m ³)	122,177	363,545
Diesel operational vehicles (l)	31,407	37,094
Gasoline (l)	15,201	13,017
Fuel (l)	306,573	366,334
Electricity (kWh)	37,176,303	36,821,574

In 2022, there was a rise in electricity consumption, attributed to the higher throughput achieved that year. However, the ratio of energy intensity consumed decreased by 10% due to energy efficiency measures implemented. These measures included reducing gas consumption at Puerto Rosales and implementing efficiencies in the use of operational vehicles and support vessels in our operations, resulting in a reduction in fuel consumption. In addition, other smaller initiatives such as switching to LED lighting, using photocells and installing motion sensors.

Energy intensity	2022	2021
Total fossil fuel consumption (MJ)	18,287,239	30,143,927
Total electricity consumption (MJ)	133,834,745	132,557,720
Total energy consumption (MJ)	152,121,984	146,752,439
Throughput (t)	50,924,282	44,096,276
Energy intensity ratio (MJ/t)	2.99	3.33

*Calculation considers Diesel (9,064 kcal/l), Gasoline (7,280 kcal/l), Fuel (9,800 kcal/kg) and Gas (9,300 kcal/m³) as per information provided by "Documento Metodológico del Balance Energético Nacional (2015). Argentina". Also considers Fuel oil density=945 kg/m³.

The control and reduction of atmospheric emissions has become an important topic for all operational sites.

While our activities usually do not cause significant emissions of sulfur oxides or ozone-depleting substances, volatile organic compounds (VOCs) are formed at our tank terminals, mainly during tank breathing and during loading and unloading. Because of their negative impact on human health and the environment, we work to minimize VOCs emissions. To reduce emissions from tank breathing in existing tank terminals, state-of-the-art vapor treatment technology is selected on a case-by-case basis with the aim of reducing emissions. Of the total installed tank capacity, 40% of the tanks already have a floating roof system to minimize vapor emissions.

GHG emissions	2022	2021
Direct Emissions - Scope 1 (tCO ₂ e)	1,284.6	1,935.04
Indirect Emissions- Scope 2 (tCO ₂ e)	10,160.28	10,063.34
Total Emissions (Scope 1 and Scope 2) (tCO₂e)	11,444,880	11,998,380
Throughput (t)	50,924,282	44,096,276
Emissions intensity ratio (kCO ₂ e/t)	0.22	0.27

* Calculation considers emission factor (EF): Gas: 1.95 tCO₂e/dam³; Diesel: 3.19 tCO₂e/t; Fuel: 3.17 tCO₂e/t and Electricity 0.2733 tCO₂e/MWh as per information provided by Cammesa (Argentina). Also considers Gasoline: 2,21 kgCO₂/l.

In 2022, due to a reduction in energy consumption, total emissions resulting from fossil fuel and electricity use were 5% lower compared to the previous year. This decrease also led to a 17% year-on-year reduction in the emissions intensity ratio.

Gearing up for growth in transition energies

Framed by our ESG commitments and aligned with our sustainability strategy, we follow global trends in the search for growth.

ARGENTINA

We have a strong position in crude oil logistics handling the most important hub of crude oil: Puerto Rosales Terminal. Puerto Rosales handles over 24 million cubic meters per year handling heavy crude oil produced in the south of the country as well as light crude oil produced in the Neuquén basin. Puerto Rosales is the outlet for surplus volume exported from Argentina. In this context, OTAMERICA is investing over 520 M-USD to support the exports projected for the next 15 years. It is expected that the final volume will increase 50.000 cubic meters per day. Additionally, the hub is used to supply -either by pipelines or by tankers- the local refineries.

It is important to note that this investment includes the latest technology in tank and pump installation, including, among other things, internal floating roofs to avoid emissions, pumps with variable frequency drives for energy efficiency, marine loading arms with emergency release couplings to avoid spills over the sea, among others.

BRAZIL

We have reached an agreement with Grupo Edson Queiroz and Copa Energia to form a joint venture, to invest in a 120,000 cbm refrigerated propane terminal in Porto de Suape, Pernambuco state, to receive refrigerated propane. Not only is this an expansion of markets and geographies, but the future partnership will also strengthen our network for servicing key supply chains of petrochemicals. Subject to the approval of certain Brazilian authorities, such as antitrust and environmental agencies, construction is expected to start early 2025.

We continue to actively pursue clean energy business developments in Brazil.

PERU

TdP handles more than 30% of all liquid fuels consumed in Peru through the five terminals it operates, being a crucial player for the security of supply and a key contributor for the development of the country. Additionally, we are actively seeking opportunities to participate in the transition process from the use of middle distillates and heavy oil to less contaminating fuels such as natural gas for the mining industry, bulk transportation, and other heavy-duty industries.

We are also looking to implementing initiatives to reduce our indirect

carbon emissions by seeking alternatives for power supply. LQS, an OTAMERICA's subsidiary in Peru, will supply up to 40% of its daily power consumption with solar panels.

Peru, as the second largest producer of copper in the world, plays a crucial role in electrification, and LQS will continue to provide critical services to the mining industry by handling their chemicals responsibly and sustainably.

COLOMBIA, MEXICO AND PANAMA

We are actively seeking opportunities to be a key participant in the energy transition in the countries of Middle America cluster, being a partner of choice for chemicals and gases with our Cartagena Terminal in Colombia, looking at alternative bunkering fuels to be handled at our COASSA Terminal in Panama and new opportunities in chemicals and new fuels in Mexico.

WATER AND WASTEWATER MANAGEMENT

GRI 3-3, 303-1, 303-2, 303-3, 303-4

Water is a valuable and costly resource that, in many countries, is already presenting shortages. Therefore, industrial and drinking water consumption is regularly monitored and optimized wherever possible. Also, our Water Saving Guideline provides guidance on how to reduce water consumption in operational sites and offices.

The water supply source varies by terminal and may include public network water, seawater extracted (desalinated by the osmosis plant), water purchased from a third party (from underground sources) and bottled water (for human consumption).

At OTAMERICA, we regularly monitor water consumption. This resource is used primarily used for sanitary purposes, building cleaning, operability testing, leak testing, activation testing of the Fire Protection System, maintenance of pipeline pressure for the Fire Protection System network, garden irrigation, pipe cleaning, equipment maintenance cleaning, and other purposes.

At some terminals, water consumption has been optimized through actions such as the incorporation of motion sensor systems in restrooms, the reuse of water from hydrostatic tests, the use of an Osmosis plant for water desalination, as well as raising awareness among internal and external personnel on water conservation through talks, training, and campaigns.

Water withdrawal	2022	2021
Drinking water (m ³)	908	1,596
Industrial water (m ³)	21,926	29,253
Surface water (lake/river) (m ³)	2,385	1,200
Ground water (m ³)	941	1,411
Rain water (m ³)	3,470	0
Ocean water (m ³)	1,109	1,078
Total withdrawal (m ³)	30,739	34,538

Wastewater discharge is a sensitive topic as it can affect surface water bodies. Industrial wastewater, also referred as process wastewater, is considered as water that comes in contact with any raw material, product, by-product, or waste during any production or industrial process, such as tank dewatering operations or tank cleaning.

Each terminal has its own method of effluent discharge and treatment, which can vary in both the treatment process and the disposal location, including potential discharge into the public sewer system, third-party treatment, discharge into the ocean, or surface waters.

Wastewater discharge	2022	2021
Industrial wastewater discharged (m ³)	9,222	14,117
<i>Discharged to surface water (lake/river)</i>	85%	73%
<i>Discharged to ocean</i>	15%	27%

WASTE MANAGEMENT

GRI 3-3, 306-1, 306-2, 306-3, 306-4, 306-5

At OTAMERICA, we carry out responsible waste management and fully comply with the local laws in each location where we operate. Our entire staff is encouraged to reduce waste generation and ensure its proper handling and treatment.

Given the nature of the products we store (crude oil, petroleum products, chemicals and others), most of our waste streams contain some form of residual oil or chemicals. As a result, they are classified as hazardous waste and need certified handling and treatment. Also, some other tasks at our terminals, like tank cleaning, generate significant volumes of wastewater or hazardous waste, mainly due to the presence of residues. Tank cleaning is related to the overhaul process planning to meet the international API 653 Storage Tank Inspections. We classify as hazardous waste all waste with physical properties (e.g., flammability, toxicity or corrosiveness), which require special handling and disposal.

On the other hand, industrial waste is referred to all waste which is not hazardous but normally does not occur in households (e.g., discarded metals, debris, packaging material etc.).

Mainly, hazardous waste comes from the following sources: Hydrocarbon storage tank sludges, Rags soaked in hydrocarbons, Gloves soaked in hydrocarbons, Biohazard waste (toilet paper, masks, PPE), Paint cans, Portable toilet waste, Waste contaminated with used oil, Containers containing or impacted by hazardous substances.

We promote waste generation reduction, and whenever possible, recycling. Some of our terminals have waste separation at the source, differentiated collection by an authorized company, and subsequent delivery to a disposal center where waste with potential for valorization enters a circular economy chain.

At OTAMERICA, we carry out awareness campaigns, clean-up events to promote the proper disposal of waste, and ongoing recycling promotion.

At Puerto Rosales terminal, we are implementing a project to install agitators in tank bottoms to reduce sediment and crude oil accumulation, with the aim of minimizing the amount of waste generated during cleaning.

At OTAS, industrial waste resulting from platform repairs (paper, cardboard, plastic, glass) is 100% recycled. At the Puerto Rosales terminal, the reported industrial waste consists of materials that are suitable for recycling, and therefore 100% of it is recycled.

At our Tuxpan terminal, campaign to eliminate single-use disposable cutlery has been adopted, whereby each terminal employee brings their own reusable cutlery from home.

Waste generation	2022	2021
Industrial waste (t)	347.89	98.62
<i>Diverted from disposal - Recycling</i>	39%	19%
<i>Directed to disposal - Landfill</i>	61%	81%

In 2022, a significant increase in waste was observed, related to the increased activity at the Puerto Rosales and Tuxpan terminals. At the same time, the percentage of recycled waste increased by 20 percentage points compared to 2021.

BIODIVERSITY

GRI 3-3, 304-1

COLOMBIA - CARTAGENA

In the influence area of the Oiltanking Colombia Terminal, there is a mangrove patch of approximately 0.35 hectares located on the north side, along the perimeter bordering Cartagena Bay. The mangrove area is not included in the National System of Protected Areas - SINAP, but

corresponds to strategically important biological ecosystems.

The terminal's operation and construction or maintenance activities do not generate significant impacts on the mangrove ecosystem. There are no anthropic interventions within the mangrove area related to terminal operations, and the area is located in a non-intervention zone according to the environmental zoning of the terminal. There are no discharges of industrial water; monthly cleaning of the stormwater channels that flow into the mangrove is performed. Activities to clean up debris carried by the tide from Cartagena Bay are carried out to preserve the area. Annual monitoring of the hydro biota at the mouth of the stormwater channels is conducted to record its status. To date, there have been no variations in the quality and condition of hydrobiological organisms in the mangrove sediment.

There are no protected or restored habitats in the terminal area.

According to the environmental characterization in the terminal area, there are no species listed in the IUCN Red List or national conservation lists.

BRAZIL - AÇU PORT

The ship-to-ship crude oil terminal at the Açú Port, RJ, Brazil, operated by OTAMERICA through its subsidiary OT Açú Servicios, is located near to the Environmental Protection Area of Lagoa do Veiga¹. OT Açú Servicios collaborates with all parties involved in order to ensure that the operation follows the highest standards at all times, minimizing any impact on the surrounding area, and maintaining strong preparedness in case of an undesired event.

MEXICO - TUXPAN

The Terminal is located within an area of influence with a protected area of mangroves and Tuxpan wetlands. It is important to highlight that the municipality of Tuxpan is considered the last reservoir of original coastal vegetation in the state of Veracruz, and a wide variety of birds are reported at the site.

During the construction stage, remains of pre-Hispanic cultures were found inside the terminal, including an architectural piece like what is commonly called a pyramid, corresponding to the Tabuco culture, which is why the INAH (National Institute of Archeology and History), decided to establish the part of the area under protection, which is why within the terminal there are two protected natural areas.

¹ T2 Porto do Açú is located within an Environmental Protection Area (APA), whereas we operate T-Oil.

■ ■ PERU - PISCO

We operate in Peru within the bay of Paracas. The Paracas Reserve, is considered an environmentally protected area, due to the unique ocean current pattern and its geography. The sea of the Paracas Reserve has one of the most abundant marine life in the world, which sustains the life of endemic species nearby, and attracts migrating births and several different species of marine mammals. OTAS operates the Marine Terminal next to this reserve in full compliance with the strictest regulations in the country in term of environmental protection and applying all available safeguards to avoid even the smallest incident that might disturb the eco-system of the bay. OTAS has operated this terminal for more than 15 years and has had no incidents that could have affected the environment.

■ ■ PANAMA - COASSA

The area where the COASSA Terminal is located is home to two species of reptiles, known as Black Iguana and lizards. Iguanas are observed within the terminal area, particularly around the administrative building and the dock area. Since the start of operations, their presence in the mentioned areas has been respected. Work is done with all staff, both own and contracted, to keep them out of danger. Similarly, work has been done with the lizards in the area, although they are observed infrequently.





SOCIAL

INTRODUCTION

COMPANY PROFILE

SUSTAINABILITY
& ESG STRATEGY

ENVIRONMENT
STEWARSHIP

SOCIAL

GOVERNANCE

ABOUT THIS REPORT

ANNEXES

OUR EMPLOYMENT

Our employees are the foundation of our success and of our corporate culture.

We want to position ourselves as a fair employer with strong ethical principles and support company growth by recruiting qualified employees and providing them with a diverse and healthy work environment.

We promote equal opportunities and diversity, which enables us to create a workforce that can adapt to changing environments and contribute to our overall success and we promote active collaboration in global teams, where our employees find innovative solutions that benefit our business and increase productivity; additionally, we invest in our employee’s professional development. We encourage our employees to take responsibility. Short decision-making paths and entrepreneurial thinking and actions set us apart. Although we act as independent business areas, we are linked in a strategic network. We strive to cultivate a shared “company group feeling” while still preserving the operating unit’s respective cultures. These priorities are anchored in our strategic approach and are fleshed out with specific measures and programs in our HR work. Our HR work includes the careful selection of suitable candidates and the continuous development and training of our employees and managers. The well-being of our employees and contractors is a top priority.

We strive to cultivate a sense of belonging that fosters employee engagement, job satisfaction and overall company success. In addition, we seek to be an employer that attracts diverse and talented people, which will ensure our long-term competitiveness.

Compliance with the standards of the International Labor Organization (ILO) is established in our binding Code of Conduct. Moreover, we abide by the Universal Declaration of Human Rights and the United Nations (UN) protocols, protecting human rights within our sphere of influence.

Our commitment is to become a magnet for motivated and talented employees who value fairness and diversity.

We plan to focus our efforts on the following dimensions²:

- Actively identify and develop talent. Ensure inclusive, equitable quality coaching and training.
- Promote diversity in our workforce and equal opportunities.
- Foster, develop and promote a compelling company culture that drives employee engagement.

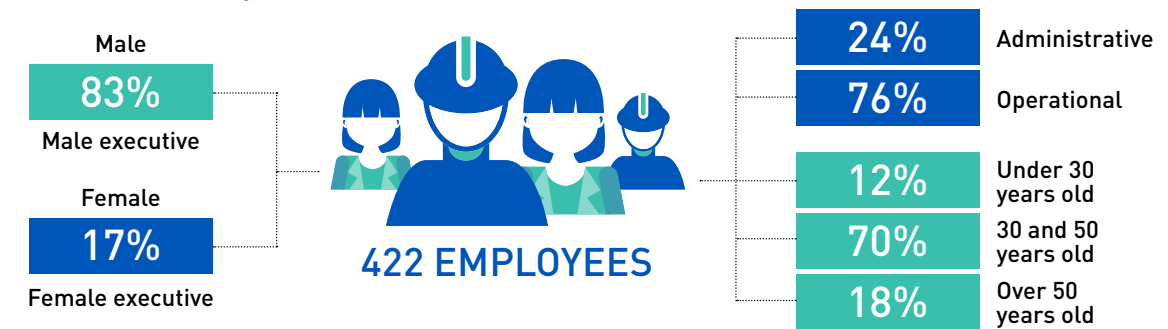
Employment practices

GRI 2-7, 2-8, 2-20, 2-30, 3-3, 401-1, 401-2

A diverse workforce is key to our success. So, whether building up our existing employees or hiring new members, we always seek to foster diversity and inclusion. Our teams come from different backgrounds, with each person contributing their unique perspectives, skills, and experience. OTAMERICA has 422 employees, most of whom work in operational shifts within a 24/7 operating and customer service model.

17% of women hold an executive position

Workforce composition



²In accordance with our SUSTAINABILITY STRATEGY 2030

Employees by gender and country

	Argentina	Brazil	Colombia	Mexico	Panama	Peru	TOTAL	%
 Male	99	101	23	59	28	39	349	83%
 Female	19	21	11	7	6	9	73	17%
Total Employees	118	122	34	66	34	48	422	100%

Employees by Contract Type by gender and country

	Argentina	Brazil	Colombia	Mexico	Panama	Peru	TOTAL	%
Full-time employees	113	116	34	15	34	48	360	85%
 Male	96	98	23	10	28	39	294	70%
 Female	17	18	11	5	6	9	66	15%
Part-time employees	1	6	0	0	0	0	7	2%
 Male	1	3	0	0	0	0	4	1%
 Female	0	3	0	0	0	0	3	1%
Contractor	4	0	0	51	0	0	55	13%
 Male	2	0	0	49	0	0	51	12%
 Female	2	0	0	2	0	0	4	1%
Total	118	122	34	66	34	48	422	100%

Employee Benefits

- In addition to the competitive base salary, we voluntarily offer extensive supplementary benefits.

As a regional organization with sites in several countries in the Americas, our employee benefits package varies based on local regulations. In

addition to legally required benefits in each country, we endeavor to provide additional benefits including:

- private health plan for employees and their families
- some level of health/medical provision at all locations
- life insurance, disability and invalidity schemes,
- and other benefits, such as flexible working locations, lunch and transfer to terminals, gym, language lessons reimbursement, annual and seniority bonuses (10 and 25 years).

Freedom of Association and Collective Bargaining

Our employees are free to join a union. As a regional business, we must comply with local regulations on freedom of association and collective bargaining. We work with some work councils to provide any required training to enable participants to fulfil their roles effectively.

Employees by gender and country

	Argentina	Brazil	Colombia	Mexico	Panama	Peru	TOTAL	%
Bargaining employee	52	118	30	47	0	0	247	59%
Non-bargaining employee	66	4	4	19	34	48	175	41%
Total Employees	118	122	34	66	34	48	422	100%

Hiring and Turnover

We promote equal opportunity for new hires and seek to achieve a balanced ratio of female to male candidates. This requires special efforts to attract candidates via different channels, as our industry remains male-dominated, especially in operational functions.

We make employment-related decisions such as hiring, promotion, evaluation, compensation, and termination solely based on talent, performance, and success. Our recruiting process promotes diversity in gender, ethnicity, and social background. This includes a specific goal to attract and retain diverse senior professionals.

In 2022, the recruitment rate was 22%, while the turnover rate stood at 19%, leading to a net increase in the total workforce.

Hiring by gender, age, and country

	Argentina	Brazil	Colombia	Mexico	Panama	Peru	TOTAL	%
By gender	38	30	5	13	1	5	92	22%
 Male	28	23	3	9	1	4	68	20%
 Female	10	7	2	4	0	1	24	33%
By age	38	30	5	13	1	5	92	22%
Under 30 years old	7	13	2	3	1	0	26	51%
30-50 years old	26	13	3	10	0	5	57	19%
Over 50 years old	5	4	0	0	0	0	9	12%

Turnover by gender, age, and country

	Argentina	Brazil	Colombia	Mexico	Panama	Peru	TOTAL	%
By gender	28	21	6	14	4	6	79	19%
 Male	23	18	4	9	3	6	63	18%
 Female	5	3	2	5	1	0	16	22%
By age	28	21	6	14	4	6	79	19%
Under 30 years old	2	4	1	3			10	20%
30-50 years old	22	16	5	11	3	5	62	21%
Over 50 years old	4	1			1	1	7	9%

Work-life Balance

We are committed to an optimized work-life balance that supports the wellbeing of all employees. Where possible, we enable hybrid and more flexible ways of working for employees. However, most of our staff work in 24/7 rotational shifts at our operations. For this segment of the workforce, part-time contracts and working from home are rarely feasible.

Nevertheless, we believe in the importance of ensuring that everyone gets sufficient time off to “switch off” from work and spend time with family and friends.

Equal Opportunity and Diversity

GRI 2-7, 3-3, 405-1, 406-1

We consider diversity and inclusion as keys to success.

We regard diversity as an invaluable commodity and a central resource for innovation and competitiveness and we seek to foster it in our workforce. Similarly, the application and promotion of equal opportunity and equal treatment without discrimination are part of our corporate culture and are established in our Code of Conduct.

We are a truly multicultural company, with 10 nationalities across the six countries in which we operate. Our organization shows a healthy mix of skilled senior professionals and talent for the future, across all layers. The average seniority of our employees is 7.7 years. We foster a diverse workforce made up of people with different mindsets, lifestyles, and life experiences. An open culture and conversation are key to nurturing such an inclusive workplace.

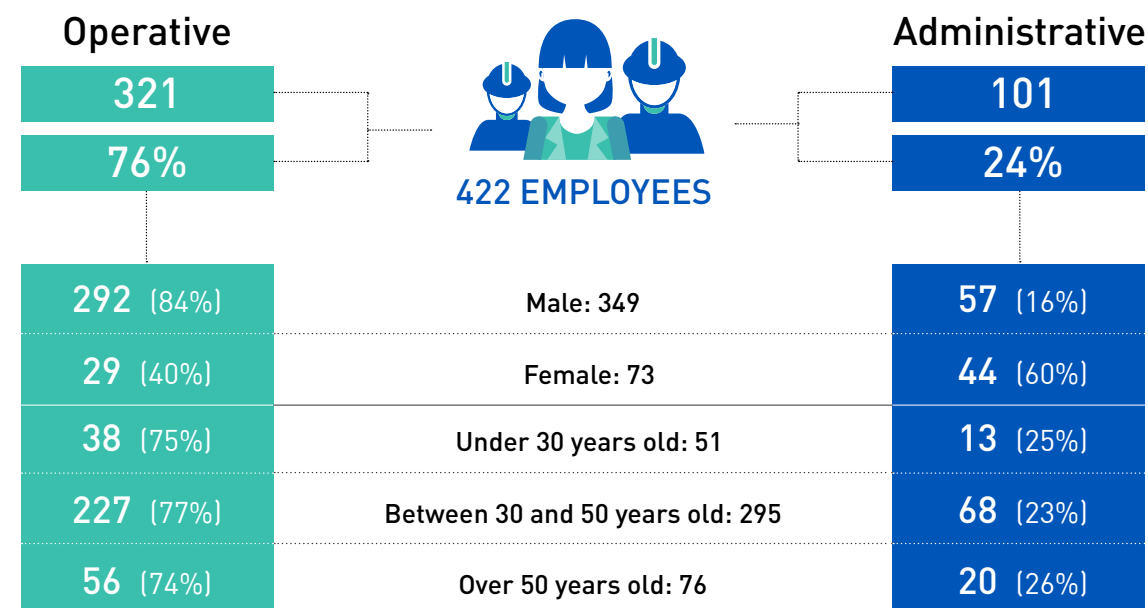
Ethnicity, religion, skin color, nationality, age, gender, political preference, or sexual orientation play no role in our hiring, promotion, compensation, or termination decisions.

- INTRODUCTION
- COMPANY PROFILE
- SUSTAINABILITY & ESG STRATEGY
- ENVIRONMENT STEWARSHIP
- SOCIAL**
- GOVERNANCE
- ABOUT THIS REPORT
- ANNEXES

With the target of promoting diversity in our workforce and equal opportunity, in 2023, we will assess and define, which diversity aspects to focus on and will develop and implement a framework to foster these topics at our terminals.

In 2022, as part of a global initiative sponsored by M&B, we launched a survey among our employees to help us in assessing overall compliance risk perception in the region, including discrimination and harassment in the workplace. Although the results showed a very low/low overall compliance perception risk, we identified the opportunity to improve cross-cultural empathy and managerial behaviors, in some countries. Therefore, working together with third-party consultants, in 2023 we will provide targeted coaching and training sessions on empathy and communication skills in various locations across the region. We also reinforced our internal communication program and conducted in-person training session to raise awareness and encourage compliance with our Code of Conduct and policies, including our policy on Prevention of Discrimination and Sexual Harassment³.

Employees by employee category, gender and age group



³No confirmed discrimination cases in 2022.

Employees by nationality and gender

	Male		Female		TOTAL	%
Brazilian	100	83%	21	17%	121	29%
Argentine	100	85%	17	15%	117	28%
Mexican	55	89%	7	11%	62	15%
Peruvian	39	81%	9	19%	48	11%
Colombian	23	68%	11	32%	34	8%
Panamanian	25	83%	5	17%	30	7%
Venezuelan	2	40%	3	60%	5	1%
Bolivian	3	100%	0	0%	3	1%
Chilean	1	100%	0	0%	1	0%
Uruguayan	1	100%	0	0%	1	0%
Total	349	83%	73	17%	422	100%

Training and skills development

GRI 2-7, 3-3, 404-1, 404-2, 404-3

We care about our teams and helping them develop the right skills and capabilities by investing in their professional development, which not only motivates and benefits the individual but also provides better performance and a line of succession in the future.

We actively develop talent. We promote investment in professional development.

Our training and development framework is established at several levels:

- Mandatory regional courses on ethics and compliance, Code of Conduct, Operational Competence Assurance and HSSE;
- Mandatory regional courses: BOT (Basic Operator Training), Life Saving Rules, Conflict of Interest and Prevention of Sexual Harassment;
- Courses, modules, and programs to teach and upskill employees in functional or leadership skills.

We provide a comprehensive set of mandatory and voluntary e-learning modules across a range of functional areas. These include 215 open programs on topics such as management, ethics and compliance, operations and Health, Safety, Security and Environment (HSSE), as well as 30 other programs targeted at expert functions and our leadership team. We also give employees the opportunity to participate in external courses and seminars to enhance their industry knowledge.

During 2022, different training programs and activities were designed to implement during 2023, focused on our new leaders' development (LIFT: A Journey to Take Leadership to the Next Level) and young university students (Junior Development Program).

External providers are brought in to implement face-to-face programs (training and coaching) on operational processes, sexual harassment issues, and new system implementations. When required by collective bargaining agreements, specific training programs are implemented at a local level.

Beyond functional expertise training, we offer individual assessment and development plans. We conduct annual performance evaluations of all employees using the HRMS (BambooHR). We empower colleagues to grow in their professional careers by encouraging everyone to create a personalized development plan.

OCCUPATIONAL HEALTH AND SAFETY

GRI 3-3, 403-1, 403-2, 403-3, 403-4, 403-5, 403-6, 403-7, 403-8, 403-9, 403-10

Management approach

Handling large volumes of valuable and potentially hazardous liquids calls for responsible and safe operations. Taking full ownership of safety performance reinforces our commitment to safety as a value that shapes all decision-making at every level of our business.

We are committed to conducting operations safely and efficiently in all our facilities around the world.

Our health and safety system are aligned with ISO 45001 standard.⁴

Our goal is to prevent accidents, injuries and occupational illness as well as protecting the environment. As a consequence, we continually optimize our activities with a technical, organizational and behavior-based safety vision while promoting a proactive safety culture.

We strive for operational excellence and exemplary HSSE performance. We aim to safeguard the people who work with us and the communities we operate in, through rigorous compliance with all applicable laws and regulations.

As stated in our HSSE Policy, we comply with all applicable laws and regulatory requirements, and pursue the following objectives in close cooperation with our customers, suppliers and distributors:

⁴ The Terminals certified under ISO 45001 are: Vitoria & Puerto de Açu, Brazil; Puerto Rosales, & Brandsen, Argentina, Pisco-Camisea and LQS, Peru; Cartagena, Colombia.

- All activities are conducted in a consistent manner with OTAMERICA health, safety, security, and environment directives and standards.
- Business activities are conducted in a manner that prevents harm to customers, employees, contractors, general public, other stakeholders, and the environment.
- Full compliance during handling, storage, transport, and safe disposal.
- Protect people, assets, intellectual property and critical information from any harm, damage, or loss.
- Openly communicate on the nature of activities, encourage dialog and report progress on health, safety, security, and environmental performance.

The effective application of our management systems and associated processes enables us to be a reliable partner for our stakeholders and to grow the business sustainably.

OTAMERICA Safety Management is implemented through our:

- HSSE Policy.
- Safety Principles and Life Saving Rules.
- HSSE Manual with guidelines and minimum requirements.
- HSSE Standards and Procedures, based on 15 management system elements.
- Integrated Audits based on the 15 management system elements and standard processes.
- Comprehensive set of HSSE tools and promotional material.
- HSSE campaigns and global initiatives.

In addition, we adhere to the following three solid pillars to improve health and safety in the workplace.

Health and safety pillars

Building on

Detailed review of current performance through audits, safety culture maturity survey, analysis of incidents, near misses, unsafe acts and root causes.

Detailed specific action plan based 15% on process systems and 85% on human behavior.

Risk Management

Risk based approach, understanding and analyzing risks. This includes hazard identification and risk assessment, process safety management, and prioritization of risks supported by OTAMERICA risk matrix.

Chronic unease mindset. It is about a last-minute risk assessment and risk competence.

Key enablers

Simplify the message to reach everyone.

Leadership in safety and role model for safety as part of the training.

Empowerment and engagement at all levels sharing the lessons learned and making visible management.

High quality contractor management.



Risk management

The scope of our health and safety management system includes all Oiltanking terminals and offices, and everyone who enters our terminals and offices.

To ensure effective risk management, we follow our risk management policies and procedures related to OTAMERICA's management system. These documents are based on the key principles of risk management to ensure full commitment, ownership & stewardship along the processes.

Risk Management System

Risk Management	Risk Management Policy	Risk Matrix & Risk Tolerance Criteria	Risk Management Definitions & Abbreviations
OT Risk Matrix	HIRA Applicability Table	Hazard identification (HAZID)	ALARP Management
HAZOP Study	Major Accident Hazards (MAH)	Layer of Protection Analysis	

All OTAMERICA management teams and employees shall demonstrate leadership and commitment by complying with the risk management system. To ensure continuous improvement of our risk management system, we conduct ourselves in accordance with the following activities.

- Follow the Risk Management Procedure.
- Conduct Management Safety Walks through the whole terminal.
- Undertake Regional Audits, following the Asset and Operations Integrated Audit System Process, within our HSSE Management System frame.
- Revision of our Key Performance Indicators and Continuous Improvement Plan, based on Audit findings and lessons learned from incidents that occurred (Root Cause Analysis).
- Record in the database all Incidents, Accidents, Near Misses Reports and Unsafe Act and Conditions, and the Corrective Actions obtained from the deviations. The monitoring of those Corrective Actions is also recorded in the system.

Safety targets and performance

At OTAMERICA, we aim to perform all business activities in a safe and efficient manner and prevent all accidents, injuries and occupational illnesses.

Establish a proactive safety culture and continuous improvement of all our activities with regard to technological, organizational and behavioral safety.

Through our Target Zero Safety Project, our goal is to achieve: Best in class safety performance TRI-R 0 for each terminal; high level of risk competence and process safety knowledge; proactive safety culture and commitment to take safety ownership; full compliance with mandatory HSSE requirements and customer satisfaction through safe operations and high availability.

Health and safety pillars

Target	Measures
1. Achieve target zero. Avoid all injuries.	Investigation of all incidents based on the actual and potential impact of the event; performance of RCAs for higher actual severity, but also for high-potential events. Conduct Management Safety Walks.
2. Strengthen the safety culture of our workforce and contractors by living the Safety Principles and Life Saving Rules.	Celebration of Global Safety Day at all terminals at the same date. Celebration of Contractors' Safety Forum at all terminals.
3. Promote the health of our employees.	Development of a program for conducting health checks for employees in line with or beyond legal requirements.
4. Promote the well-being of our employees.	Carrying out health and wellness prevention activities for employees and their families.

Safety performance

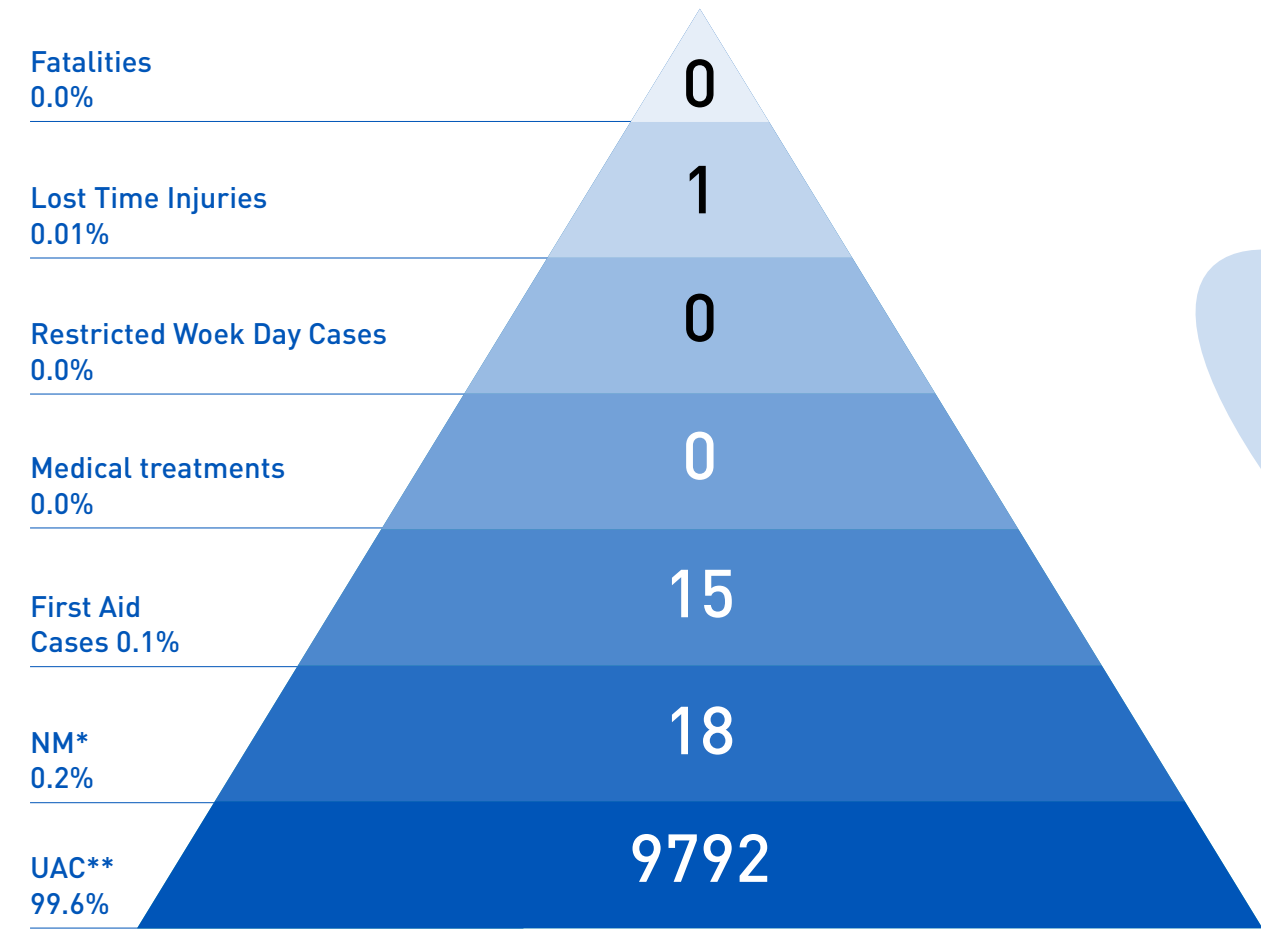
The system used to control and keep all our employees' records is the HR Bamboo System.

Additionally, all contractors must be registered in the Contractor Safety Database and provide relevant information to be approved before being granted access to the job site. A contractor is any individual engaged in work-related activities for OTAMERICA in order to provide services in connection with the business, and the contractor company is under the company HSSE Management system and/or under direct company supervision. Subcontractors' s injuries are counted as KPI within the company.

In 2022, of all working force, there was only one recordable injury (lost time injury). The condition was fracture of the 5th metatarsal without displacement (45 days off - sick leave). Then, there were no other recordable injuries or recordable occupational diseases.

	Own Employees		Contractors		Combined	
	2022	2021	2022	2021	2022	2021
Total Recordable Injuries	1	0	0	0	1	0
Total Recordable Injuries (TRI) Rate (Per 1,000,000 hours worked)	1.27	0	0	0	0.5	0
Total Lost Time Injuries	1	0	0	0	1	0
Lost Time Injury (LTI) Rate (Per 1,000,000 hours worked)	1.27	0	0	0	0.5	0
Total Reportable Near Misses *	9	16	9	25	18	41
Total Reportable Near Misses * Rate (Per 1,000,000 hours worked)	11.45	22.84	7.41	21.62	9.00	22.08

* Includes Contractors and subcontractors. The only excluded ones are truck drivers and surveyors because they are not OTAMERICA contractors or employees.. Nevertheless, any incident related to them is recorded as a third-party event in our database.



* People safety Near Misses only.
 ** UACs currently include all eventst

OUR ACHIVEMENTS

- Zero workplace accidents beyond first aid from June 2020, to January 28th, 2022.
- Maintain a low accident rate in the last 4 years, both for employees and contractors
- Aligned with OSHA guidelines.
- Conducted 814 Management Safety Walks in our terminals.

INTRODUCTION

COMPANY PROFILE

SUSTAINABILITY
& ESG STRATEGY

ENVIRONMENT
STEWARSHIP

SOCIAL

GOVERNANCE

ABOUT THIS REPORT

ANNEXES



Incident management and emergency response

We have an incident database to manage incidents. This mechanism consists of reporting and recording all accidents, incidents, near misses, unsafe acts and conditions, as well as Management Safety Walks in the system. In addition, the deviations' monitoring and corrective actions are also recorded in the same database.

Other OTAMERICA databases used are: Annual database (system to record operation data, performance, CSR, HSSE training, etc.), MOC database (system to record and approve terminal changes), Action Tracker System database (ATS) and Contractor Management (system to pre-assess and evaluate contractors).

The Bscat system is the tool used to perform the root cause analysis and employees are inducted in how to use it effectively and objectively.

For workers who want to remove themselves from work situations that they believe might lead to injury and/or illness, we have three principal initiatives:

- **We Care for Each Other.** Enable all workers and contractors to stop unsafe activities.
- **Safety Intervention.** Education program to identify and stop unsafe conditions and activities until safe conditions are guaranteed.
- **Take 5' for Safety** - A short guide to stop, think, identify hazards and control the job to do it safely.
- **Recognition program and HSSE promotion.** Program to reward employees that had good safety behavior/safe performance/safety best practice.
- At the same time, toolbox talks are held at all OTAMERICA terminals to discuss various safety topics before work begins.

Best practices & safety initiatives

Safety principles

In 2020, for our journey of continuous improvement towards Target Zero (no harm to people and the environment), we have introduced the following Safety Principles which reflect our beliefs and the way we enhance our safety culture and performance. These principles provide guidance and a sound foundation for the decisions and actions of all employees and contractors.

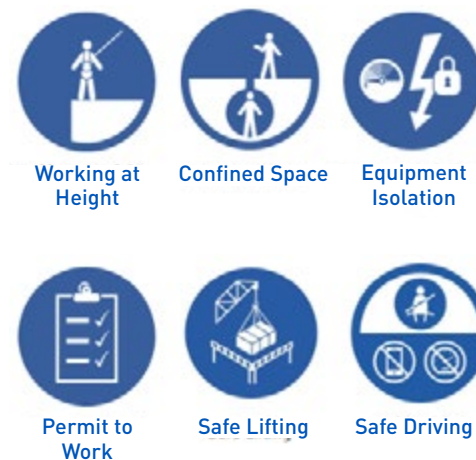
1. Health and safety of people and the environment is valued above all else.
2. All incidents can be prevented.
3. Management at all levels is accountable for safety and leads by example.
4. We plan and train for safety.
5. Everyone looks after each other, no matter who they work for.
6. Everyone has the authority to STOP any unsafe work.
7. Safe behavior is recognized, acknowledged and reinforced.
8. Zero tolerance for safety breaches.

Management will ensure the implementation of these Safety Principles with the expected active support and involvement of all employees and contractors.

We ensure strong hsse leadership from management, and well established hsse management and network.

Life saving rules

In 2020, we introduced Six Life Saving Rules, adapted from the International Oil & Gas Organization industry standard. These industry standard rules provide us with a common language for employees, contractors and third parties working on the company premises. As an approach to maintain our journey safe, we communicate the rules, make them visible, ensure everyone leads by example, and measure the progress.



We care for each other

We Care for Each Other is a program or a paradigm shift to protect each other through careful interventions to prevent incidents, creating a safety culture where protecting others is key to achieve flawless operations. Workers are engaged with each other to reinforce safety actions and/or to ensure that potential risks are mitigated by safer actions and/or behaviors.

A job can always be done safely. Taking unnecessary risks is not an option.

Safety interventions - Intervene with respect

Intervene with Respect supports our last-minute risk assessment "Take 5 for Safety" as well as "Management Safety Walks". The objective is:

- Create simple and efficient tools for the partnership between employees, managers and contractors.
- Trigger discussions about risk and related safety measures.
- Can be applied in all daily work situations with very limited additional effort.
- Empower all employees and trigger feedback by the management to drive continuous improvement.

Everybody is empowered to stop any unsafe act or identify any unsafe condition and is encouraged to do so.

Recognition program and hsse promotion

The Recognition Program objective is to recognize and reward OTAMERICA employees and contractors for those behaviors, contributions, and achievements that show our Safety Values. All personnel, either individually or in working groups, demonstrate their commitment and motivation towards reaching the OTAMERICA safety goal of zero injuries.

In order to strengthen our safety culture through leadership and involvement of all employees, the recognition program will follow the guidelines below.

Promote personal safety as a fundamental value for OTAMERICA employees, as well as for contractors working for the company. Expand the leaders' commitment as mentors and promoters of OTAMERICA safety fundamental values.

- Foster recognition of individual and group commitment to working in a safe environment where nobody gets hurt.
- Shape the safety culture at all levels of the company.

For HSSE promotion, events and activities are held. Some examples are: Global Safety Day, Sharing Best Practices, and Rewards and Recognition Programs.

GLOBAL SAFETY DAY

The OTAMERICA Global Safety Day 2022 focused on highlighting the importance of the human factor in safety leadership. We held our Global Safety Day across all our offices and terminals around the world, where employees shared best practices, identified opportunities for further development and brainstormed together on how we can make sure every employee has a safe working environment.

In October, during the Global Safety Day, with the participation of the Country VP, the Regional VP HSSE, the Terminal Manager, employees and key stakeholders, the Golden Lighthouse Award was presented to Oiltanking Açú Serviços for having the best HSSE performance in OTAMERICA.



Health and safety communication, participation and consultation in the workplace

At OTAMERICA, we give special importance to health and safety talks, and we encourage all employees to participate in them. Also, we have one HSSE committee per terminal to review health, safety and environmental performance, as well as current goals and challenges. During these meetings, employees' queries are reviewed and solutions are proposed for subsequent implementation.

In addition, there are two annual management meetings where safety performance is analyzed. Actions are determined to ensure employees and contractors well-being. Another annual meeting is held, with Assets & Operations and HSSE key contacts and regional VPs to discuss operational excellence, innovation, HSSE achievements and challenges.

There are HSSE committees at all terminals. We encourage employees to participate in all health and safety activities.

Occupational services at work

To ensure occupational health and safety quality at all workplaces, and to ensure that occupational health and safety services are enriching for everyone, we have one occupational physician per terminal, who provides health advice to all employees.

Some other benefits offered to our personnel include a comprehensive annual medical check-up, monitoring of health indicators (diabetes, cholesterol, high blood pressure, etc.), provision of healthy meals, and monthly gym reimbursement.

All employees and contractors must be affiliated with the corresponding health and safety system according to the jurisdiction regulations as a condition of entry.

Celebrating good practices

We prioritize our employees' health by conducting annual health check-ups at our terminals.

In 2022, OTAMERICA Colombia, in collaboration with the Occupational Health and Safety Laboratory Eduardo Fernández, conducted health assessments for 100% of its employees. These assessments covered various health indicators, and the obtained recommendations proved highly beneficial. They were taken into account for the upcoming year's Health and Safety Plan.

This analysis gave relevant information about the health of our employees and advised us on how to proceed to keep improving. As a result of this good practice, we know that we must keep working on:

- Promoting sport practices through events and awareness.
- Emphasizing and educating on ergonomics, for activities carried out inside and outside the workplace.
- Carrying out in-deep analysis of occupational diseases to reduce absenteeism.
- Working with the occupational physician to plan ahead and implement these good practices.

We intend to extrapolate this good practice to other terminals.

Training

Another resource to develop our activities with health, safety and respect is the training and education of our employees, contractors and visitors. Before carrying out any activity or visit, they must go through the orientation process.

During the orientation process, the main safety protocols are explained. Afterwards, the person receives specific training on the position/role they will perform.

Our commitment to health and safety is strong and we continuously track our training performance. This includes the total training hours for employees, number of trained people during the year, and the average annual training hours per employee.

HSSE Training

	2022	2021
Total training hours	21,463	18,831
Total trained people	422	416
Average hours of training per year per employee	50.86	45.3

We have a strong focus on training. During 2022, our employees received over 21,000 hours in internal and external HSSE training.

CARING ABOUT COMMUNITIES

GRI 3-3, 413-1

We are committed to integrating economic, ecological and social concerns into all business operations in order to achieve long-term, profitable and sustainable growth.

We want to create value for our employees, shareholders, and the society, while protecting the environment.

We put our values into actions, integrate the principles of sustainable development across our entire value chain, and encourage our employees to actively participate.

At OTAMERICA, we are aware that our operations can have an impact on local communities, and strongly believe that we have a responsibility to act as a good neighbor, to build trust and mutual respect. We show our commitment in the form of financial contributions and in-kind donations, as well as volunteering work by our employees.

Corporate social responsibility

In 2022, we defined a comprehensive framework to guide our Corporate Social Responsibility activities, with the overall objective of contributing to a healthy natural environment and resilient, inclusive communities.

We work hard to create a positive impact on:

- Sustainable and healthy environmental habitats.
- Socio-economic inclusion and equal opportunity.
- Ad-hoc emergency relief and crisis support.

Our grand vision is to support human development – including the well-being of the communities around us.

In line with our values, we strive to contribute to the well-being of the communities in which we operate to generate additional benefits for society.

Within the framework of the five focus areas, we have defined - Environment, Education, Health, Culture & Sports and Humanitarian Aid - we are committed to providing financial support, voluntary work of our employees and cooperation with charitable organizations.

Let's live up to our motto "Connecting energies" and make a positive difference for our local communities.

1. OTAMERICA aims to act as a good Corporate Citizen, employees have a "volunteer" spirit.
2. Employees have already organized Corporate Citizen projects at many locations, and obtained a really positive outcome.
3. Corporate Citizenship contributes back to the community & increases the "license to operate".



Following our strategic approach, we define the following targets.

Targets and Measures

Targets	Measures
1. Increase the time dedicated by our employees to a good cause and create an environment in which such commitment is encouraged and available.	Develop and implement processes for employee volunteering. This should include a "corporate volunteering time" provided to every employee, to be used for charitable activities.
2. Increase the time dedicated by our employees to a good cause and create an environment in which such commitment is encouraged and available.	Skill based volunteering for activities like recreational workshops, school reinforcement, etc.
3. Expand our corporate citizenship activities to the communities where we operate by leveraging the talents and abilities of volunteers to serve a specific community.	Employment (employees + contractors) generation in the area of direct influence.
4. Foster human development in the communities where we are actively promoting productive employment and decent work.	Corporate volunteering focused on improving the social/ economic conditions of schools/ hospitals in the area of direct influence.
5. Meet an annual donation target in the communities where we operate.	Contribute with a monetary donation focused on improving social/ economic conditions of schools/ hospitals in the area of direct influence.

Corporate citizenship projects

In 2022, we invested in a total of 41 initiatives framed in four focus areas: Environment, Education, Culture and Sports, Humanitarian Aid, and Health.

HUMANITARIAN AID AND HEALTH

- Engaging and supporting children within the framework of humanitarian projects. Also, charitable donations were made to the community.
- Led health care campaigns (Dentistry/Pediatrics/Child Health Division). Also, medical equipment was donated to individuals and hospitals.
- We carried out an influenza vaccination campaign for the employees at all terminals with the purpose of providing them protection against the 2022-2023 seasonal influenza season.

EDUCATION

- Provided monthly scholarships and different types of support to help teenagers to continue their studies and offered support to their families.
- In 2022, over ten units of fans and air conditioners, 60 backpacks and more than 20 scholar kits were given as charity to schools and kindergartens.


CULTURE & SPORTS

- We were part of different projects with the aim of promoting and fostering the development of communities located in places of high social vulnerability with low purchasing power through sports and social assistance actions.
- We were involved in the 10k race to benefit the Volunteer Firefighters, shirts were donated and bottles of mineral water were given to the firefighters. - OT PRO (Puerto Rosales - Argentina).

ENVIRONMENT

- With the aim of raising awareness in relation to social and environmental impacts, OTAMERICA, in partnership with the Ministry of Environment carried out its corporate volunteering initiative involving its employees in different activities. - COASSA (Colon - Panama).
- A plastic, paper and cardboard recycling campaign was implemented in the office to raise awareness and improve waste management - OTMEX TUX (Tuxpan - Mexico).

In total, we contributed over \$83,000 in corporate donations in which almost 200 employees were involved contributing with 1,069 hours of their time and benefiting more than 9,000 people

 \$ 83,209 Investments in social projects and actions	Corporate Donations (\$)	83,209
	Volunteering Working Time (Hours)	767
	Volunteering in Free Time (Hours)	302
	Employees Involved (No. of Volunteers)	188
	People Reached (No. of People)	9,143

Fire brigade

In May 2022, a bushfire occurred in the mangrove areas surrounding the TAS-Tuxpan Terminal located in Mexico. The fire brigade and internal personnel worked hard to support local authorities in fighting the fire. **More than 59 employees volunteered with over 790 hours of their time.**



Plastic recycling campaign 2022

During 2022, OTAMERICA conducted a recycling campaign in which items with potential value were delivered to a collection center dedicated to the circular economy.



Three Kings' day campaign

In February 2022, we organized a charity gift delivery to "George Washington" kindergarten on the occasion of Three Kings' Day. (Tuxpan - Mexico).



Casa Do Menino

In 2022, 500 basic food hampers were donated and distributed under their supervision to families in the Cobi de Cima and Argolas neighborhoods. Around 200 people were reached through donations. In addition, we contribute with monthly financial support, which has been used to finance its activities.

Between 2010 and 2019, approximately 3,300 young people and adults were served, with more than 200 different activities. In 2020 and 2021, the association's work was greatly affected by Covid-19 and was unable to carry out educational and leisure activities, but managed to impact around 200 people through donations.

Casa do Menino is a non-governmental and non-economic institution in Brazil created and operated for over 50 years.

Concerned with the reality, Casa do Menino offers to the community workshops, lectures, cultural activities and income generation training.

It functions as a community space, providing children, young people and their families at social risk with alternatives for education and leisure.



Fight Club Team Sports Association

In 2022, we donated 130 balls. In addition, a lecture on the environment was held for around 50 participants in December 2022.

The Fight Club Team Japan Sport Association serves around 170 people including children, teenagers and adults from the neighborhoods of Vila Velha, Brazil. It was created with the aim of promoting and fostering the development of communities located in places of high social vulnerability and low purchasing power.

The objective is to provide, through sports and social assistance, the growth of children and adolescents with notions of companionship, responsibility and respect for others.

The main criterion for participating in the Project is that the student is enrolled in the Public Education Network.



The aim was to raise awareness about several important issues for everyday life. It addressed conscious consumption, proper waste disposal, conscious use of water, risks related to venomous animals and insects and how to prevent accidents, handling and storage of cleaning products. In addition, risk situations that can lead to domestic accidents and how to seek assistance when they occur were also discussed.

“Dom Mauro Pereira Bastos” Project

Dom Mauro project located in Paul, Vila Velha (Brazil) consists of offering workshops, psychological support, and school support to 60 children and teenagers from 7 to 17 years old from the community and surrounding areas.

In addition, in 2022, 64 backpacks were donated and distributed under the program.



Junior Achievement

The Junior Achievement organization was founded in Espirito Santo (Brazil) in 2001, and it is the largest and oldest organization of practical education in economics and business, registering the fastest growth in the world.

Its mission is to awaken the entrepreneurial spirit in children and young people, while still at school, providing them with a clear vision of the world of work, enabling them to learn to overcome barriers and plan their goals for the future.

With this in mind, OTAMERICA is a partner and contributes to the project in the São Torquato community providing financial support, which has been used to fund its activities.

In September 2022, an activity was held at “Escola Estadual de Ensino Fundamental e Medio” (EEEFM) “Silvio Roccio”, where OTAMERICA volunteers spoke about technological development and the future professions to about 30 young people.



Rayito de Luz

OTAMERICA sponsor “Rayito de Luz” and donated financial resources and labor to expand the dining room, where various activities are carried out.



As OTAMERICA, we really care about supporting this type of programs that includes nutritional assistance, early stimulation, health promotion, and training for families and staff in early childhood spaces.

Villa El Pescador

Since 2015, LQS has entered into an agreement with the local community within its area of influence, VILLA EL PESCADOR, to cooperate in specific projects that the community has identified as the ones with the most significant impact, which are training and education in emergency response and first aid, health campaign for early diagnosis with greater emphasis on pediatrics; and Christmas holiday support for children.



INTRODUCTION

COMPANY PROFILE

SUSTAINABILITY
& ESG STRATEGY

ENVIRONMENT
STEWARSHIP

SOCIAL

GOVERNANCE

ABOUT THIS REPORT

ANNEXES

Governance

CORPORATE GOVERNANCE

GRI 2-9, 2-10, 2-11, 2-12, 2-13, 2-14, 3-3, 405-1

Committing to good corporate governance.

Good corporate governance is not only a legal and ethical obligation but is essential to our long-term success. By adhering to a sound set of practices, principles, and policies, we ensure our company's future viability and strong reputation as a responsible partner for progress.

Corporate compliance and business ethics are an integral of being a responsible business partner. They have always been, and always will be, a core principle for OTAMERICA as part of Oiltanking GmbH.

OTAMERICA is a division of Oiltanking created to develop the energy business in Latin America. Oiltanking, in turn, is a wholly-owned subsidiary of Oiltanking GmbH.

Also, OTAMERICA conducts its operations through various subsidiaries of Oiltanking, whose trade names are :

	ARGENTINA	Oiltanking Argentina S.A. / Oiltanking Ebytem S.A.
	BRAZIL	Oiltanking Terminais Ltda. / Oiltanking Acu Servicios Ltda.
	COLOMBIA	Oiltanking Colombia S.A.
	MEXICO	Oiltanking Mexico S. de R.L de C.V.
	PANAMA	Colon Oil and Service S.A.
	PERU	Oiltanking Perú S.A.C. / Oiltanking Andina Services S.A.C. / Terminales del Perú / Logística de Químicos del Sur S.A.C.

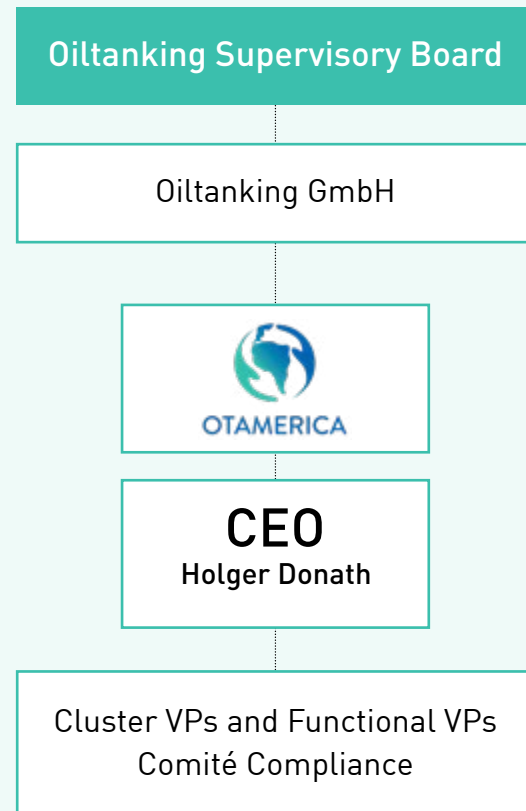
To develop the energy business in Latin America, the Supervisory Board of Oiltanking GmbH created the OTAMERICA division, which is headed by its CEO, Holger C. Donath, to whom 4 Cluster VPs report, responsible for the operations in Argentina, Brazil, Colombia, México y Panamá and Peru, and 6 functional VPs: Finance & HR, Assets & Operations, Business Development, HSSE, IT and Legal & Compliance. OTAMERICA also has a Compliance Committee, the highest regional authority on compliance-related matters. The Compliance Committee operates in accordance with its Compliance Charter.

Organizational structure

OTAMERICA's CEO is responsible for the management and oversight of the operations of the independent business unit, OTAMERICA, under the supervision of a committee of Oiltanking GmbH's Supervisory Board made up of four members.

Supervisory Board's Committee

- 1/4 independent members
- 1/4 female members
- 4/4 executive members
- 1 between 30-50 years old and 3 over 50 years



- INTRODUCTION
- COMPANY PROFILE
- SUSTAINABILITY & ESG STRATEGY
- ENVIRONMENT STEWARSHIP
- SOCIAL
- GOVERNANCE**
- ABOUT THIS REPORT
- ANNEXES

The Supervisory Board is responsible for overseeing the effective management and control of Oiltanking GmbH and its subsidiaries on behalf of its shareholders, as well as supervising the managing directors’ conduct of the companies’ affairs. The management of the business and affairs of the company is the managing directors’ responsibility. In addition, the Supervisory Board has delegated management responsibilities concerning the company’s affiliates in Latin America to the president of OTAMERICA, Holger Donath.

The Supervisory Board aims to ensure that the managing directors act within a control and authority framework designed to enable risk to be prudently and effectively assessed and monitored. There are, however, certain significant matters which require approval by the Supervisory Board. The principle underlying this approach is the need to ensure that appropriate matters can be dealt with effectively under delegated authority while ensuring good corporate governance by requiring Supervisory Board approval for certain significant decisions.

In 2023, we will update the Approval Matters Schedule requiring Supervisory Board approval for certain matters and, information to the Supervisory Board Committee by OTAMERICA’s President concerning other matters.

We put sustainability at the heart of our business activities, to operate safely and to avoid negative impacts on the environment.

For this, we conduct our activities in an ecologically responsible manner, and we endeavor to use natural resources as efficiently as possible. This includes the reduction of our energy consumption while at the same time promoting the use of renewable energy to reduce our greenhouse gas emissions and thus protect our climate. We always strive to conserve resources such as water and to reduce waste. Therefore, we expect our employees to practice resource efficiency and to minimize the harmful effects of their activities on the environment.

Oiltanking GmbH expects the management of OTAMERICA to ensure that their organization complies with defined minimum requirements, while at the same time going beyond and becoming an ESG leader. It also expects OTAMERICA to continuously monitor and comply with new national and international ESG regulatory developments. For internal monitoring and reporting purposes, we must annually fill out a self-assessment ESG questionnaire and provide KPIs. Sustainability reports are prepared by OTAMERICA and then reviewed by Supervisory Board before being published.

ETHICS AND COMPLIANCE

GRI 2-15, 2-16, 2-23, 2-24, 2-26, 2-27, 3-3, 205-1, 205-3, 206-1

Our Code of Conduct and values are our guide for responsible and ethical business. On this basis, we further develop our Policies framework. We share a common set of values across Oiltanking GmbH, guiding our actions and our behavior: we treat one another with respect, take full ownership, stand by our commitments, and act with integrity and responsibility towards all our stakeholders.

Corporate values

<p style="text-align: center;">Respect</p> <ul style="list-style-type: none"> • We have high respect for the individual and care for our people. • We foster equal opportunity and diversity. • We empower and promote our employees based on their talent, effort and achievements 	<p style="text-align: center;">Accountability</p> <ul style="list-style-type: none"> • We take ownership of what we do and live up to our high reputation. • We stand by the commitments we undertake. • We expect our employees to be accountable for their decisions and actions.
<p style="text-align: center;">Integrity</p> <ul style="list-style-type: none"> • We act ethically and comply with all legal requirements. • We deal with all stakeholders honestly, fairly and transparently. • We believe that trust is the foundation for long-term partnerships. 	<p style="text-align: center;">Responsibility</p> <ul style="list-style-type: none"> • We commit ourselves to excellence in health and safety and continuous improvement. • We strive to minimize our environmental impact and drive sustainability. • We are good neighbors wherever we operate.

Ensure ESG integrity in our own business and projects.

In our own business, we continue to apply strict compliance with environmental, legal, and regulatory standards, as well as making continuous improvements to our policy framework and standards. Mandatory ethics and compliance training is part of the onboarding process for new employees, who also undergo periodical refresher training.

In 2022, OTAMERICA focused on setting up its own Compliance structure, by approving and implementing policies, communication campaigns, and training programs on the prevention of discrimination and harassment in the workplace and towards increasing the awareness level of our whistleblowing channels.

As provided for in our Code of Conduct, OTAMERICA is committed to meeting all applicable trade sanctions and embargo regulations worldwide. We have approved policies and installed processes and systems that allow us to check vessels and business partners against sanctions. All incoming vessels will be screened before mooring to our jetties and all products screened before entering our terminals.

This does not only allow us to detect sanctioned vessels or products but also considers the Office of Foreign Assets Control (OFAC) Guidance to Address Illicit Shipping and Sanction Evasion Practices. Business partners and, where available, their ultimate beneficial owners (UBOs) will be checked periodically against sanction and embargo lists, including lists from Australia, Canada, the EU, Japan, Switzerland, the United Kingdom, the United Nations, and the United States. This systems help us towards ensuring that all our entities in the region are safeguarded from any potential sanction risk.

We regularly train our people and inform them of changes in sanction regulations. Along with a constant exchange with our customers, we strive to ensure full compliance with all applicable sanction regulations. Each terminal applies a due diligence process, checking against a global money laundering and terrorism database. In addition to this process, each terminal defines what controls and prior checks are required for its operations. All third parties that have any commercial relationship with OTAMERICA are evaluated with corporate due diligence tools and local controls.

Our values are underpinned by a robust policy framework, which stipulates how we conduct business. The framework includes the following policies and procedures:

- **Anti-money laundering:** preventing money laundering and financing of terrorism in line with the principles and standards of applicable

legislation and industry practices.

- **Anti-bribery and corruption:** conducting business in compliance with all applicable anti-bribery and anti-corruption laws.
- **Whistleblowing platform:** fostering a work environment in which all employees feel professionally responsible, empowered, and able to safely express any concerns with respect to business decisions or suspicions of unethical or illegal behavior, while prohibiting retaliation and outlining the procedure for reporting retaliation
- **Preventing discrimination and sexual harassment:** a zero-tolerance approach to discrimination, harassment, or bullying, including sexual harassment.
- **Third-party management:** the mandatory rules and requirements to be followed prior to engaging with any business partners and until the relationship is terminated.
- **Conflict of interest:** addressing how conflicts of interest can be identified, avoided, and successfully mitigated.
- **Anti-trust policy:** to ensure that we do business according to fair market practices, always complying with competition laws and regulations.

There are no legal actions filed against OTAMERICA or any of the subsidiaries of Oiltanking in the region alleging anti-competitive behavior, anti-trust violations or monopoly practices or for unfair competition or antitrust violations.

Whistleblowing

- OTAMERICA aims to create a system of trust that offers maximum protection to all those who wish to share their Compliance concerns. A system that ensures that all reported concerns are addressed in a timely, fair, and professional manner. To this end, we have approved a Whistleblower Policy and set up a whistleblowing platform, Speak Up. It is very important to us that whistleblowing channels are fully and rightly utilized, so that we can address any potential misconduct.

In 2022, there were whistleblowing cases across all our entities related to several compliance issues but were no confirmed findings concerning, same as bribery cases

Therefore, there were no other conclusions to be drawn from the number of cases reported.

The cases addressed are a valuable step, as we aim to foster and maintain an open, respectful culture in which people are comfortable and feel safe to report any misconduct or misbehavior.

- INTRODUCTION
- COMPANY PROFILE
- SUSTAINABILITY & ESG STRATEGY
- ENVIRONMENT STEWARSHIP
- SOCIAL
- GOVERNANCE**
- ABOUT THIS REPORT
- ANNEXES

Conflict of interest

- The overall objective of the Conflicts of Interest policy is to ensure that employees perform their duties objectively in the interest of OTAMERICA and to protect against reputational damage through a coordinated approval and disclosure process. It provides guidance on how conflicts of interest can be successfully identified, avoided, or mitigated. It describes the obligations of employees in cases where they are in a situation of potential conflict of interest.

In 2022, training was conducted on the topic through the BambooHR platform. Each employee must complete, on this same platform, a conflict-of-interest declaration form. If any situation arises, it is evaluated by the Legal & Compliance area and the area manager of the employee involved.

Training and awareness

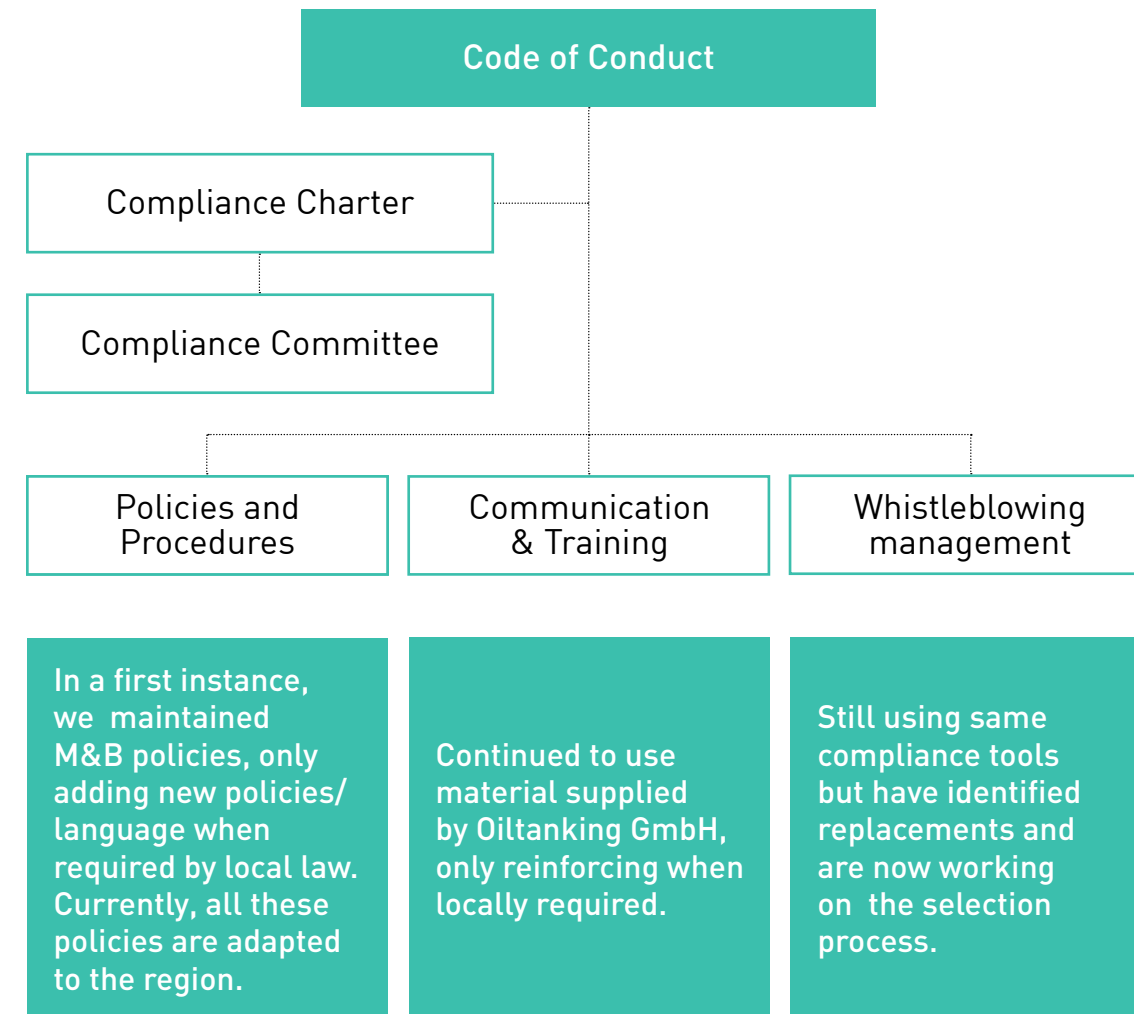
- In 2022, we rolled out a training and awareness campaign on our policy on Preventing Discrimination and Sexual Harassment as part of our ongoing focus on creating a safe and respectful workplace for all our employees. The aim was to educate employees on what constitutes harassment and empower everybody to speak up if they suspect illegal or unethical behavior. The training was delivered in an e-learning format through the BambooHR Platform and continues to be conducted for all OTAMERICA staff (97% completed it, so far).

Integral compliance system

Until 2022, the Latin American region did not have its own independent Compliance structure, which was centralized by M&B. OTAMERICA’s function was then limited to supporting the requirements of M&B in terms of training and support in whistleblower investigations.

In mid-2022, as a result of the Accelerate Project, OTAMERICA began to develop its own Compliance structure independently. Initially, it resulted in a "hybrid system", as M&B maintained a key role in governance (approval of Policies) and provision of training materials and compliance tools (3PM, Vesselcheck, SpeakUp). In 2023, OTAMERICA will be required to have its own Compliance structure ready to operate independently.

Compliance Plan Structure



Ethics and Compliance (“E&C”) is part of the Legal Department and one of the responsibilities of the OTAMERICA’s General Counsel (“GC”) and its team. The Legal & Compliance area is formed by the VP of Legal & Compliance, who performs the function of Compliance Officer and Compliance Analyst Latam. Finance managers act as “compliance coordinators” in each cluster.

OTAMERICA has its own Compliance Committee, as the body ultimately responsible for compliance in the region, approving compliance programs and policies, providing guidance, reviewing whistleblowing cases, and reporting to M&B when warranted. The committee meets quarterly to evaluate all relevant Compliance and Integrity issues and it is made up of the following members: CEO, VP Legal & Compliance, VP Finance&HR and HR Manager.

RISK MANAGEMENT

GRI 2-12, 2-13, 2-16

To achieve long-term success and controlled growth, we rely on a healthy mix of risk among the operating units, without neglecting ecological and social aspects. The operating units act independently while being strategically connected.

One of the greatest challenges as we pursue our strategy of controlled, long-term growth is to limit the manifold financial, operational and HSSE risks. That is why we work based on a permanent and thorough risk management scheme that individually rates all risks and defines tailor-made mandates, tasks, and responsibilities. To further ensure a healthy mix of risk, all risks – including social and environmental ones – are assessed in the context of the entire group of companies. We take a decentralized approach whereby risks are broken out to the individual companies and responsibility is assigned at the operating unit level. The principal risks that may affect future business performance include:

- Currency fluctuation.
- Another international financial crisis flare-up and/or sustained economic downturn.
- Political conflict in oil-producing countries and the resulting tensions in the oil markets.
- Rising prices for natural resources and purchased energy.
- Environmental and natural disasters as well as effects of climate change.
- Higher risks in countries we are active in.
- Global pandemic, such as the global outbreak of COVID-19.

In 2022, a project was started to develop corruption risk matrices for each country in the region, with the support and advice of consulting firms and studies specialized in compliance regulations in each country. At the end of 2022, we began to develop the risk matrix in Argentina and it will be completed in 2023. By 2023 we will be working on the development of the matrices for Peru, Colombia, and Panama.

In addition, we will assess ecological and social risks as part of our risk management and address them in collaboration with the relevant functions.

Data protection

The technological advances of our time are accompanied by an ever-growing amount of data files and their interlinking. In addition to undeniable advantages, this also brings new risks to the information privacy, such as cyberattacks or a potential anarchy in data usage, and it entails a commitment to maintain the privacy of information as data stewards.

Privacy is a fundamental right enshrined by the United Nations. In the countries where we operate, the protection of Personal Data is regulated. These provisions have become fundamental pillars of governance and compliance for us.

The data protection system is based on the principle of "Demonstrated Responsibility," according to which, as those responsible for processing Personal Data, we must be able to demonstrate both the implementation of appropriate and effective measures to fulfill legal obligations and the ability to protect data subjects. This materializes as a genuine commitment of our organization to safeguard personal data at all levels: shareholders, the board of directors, the CEO, and management.

Ultimately, sound corporate decision-making focused on the care of protected information and the responsible management of individuals' data are matters of organizational transparency and an appropriate response to information security incidents, representing issues of corporate sustainability.

ECONOMIC VALUE

GRI 2-6, 3-3, 201-4, 204-1, 308-1

Get the company fit for the future with a sharp eye on existing markets and open eye on new business areas.

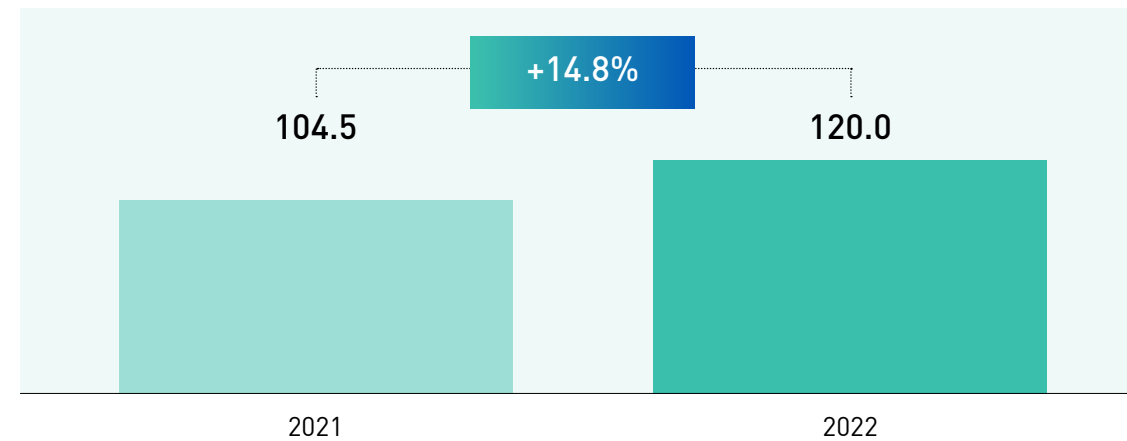
Our business structure lays the foundation for building a globally diversified portfolio geared towards future market requirements, thereby paving the way to a more sustainable world. We will drive growth

opportunities in Latin America by serving current and future local energy demand needs. Our terminals in Latin America mainly serve gasoil and unrefined petroleum products, such as crude oil. Petroleum products are still a growth market in Latin America, where we are well positioned to further expand our service position and partnerships.

We continuously strive to improve our terminals' performance by further enhancing the effectiveness and efficiency of our operations, taking sustainability into account. Moreover, we take an active approach to managing our global asset portfolio by continuously evaluating and optimizing our footprint thereby enabling a shift towards future growth markets and low-carbon products.

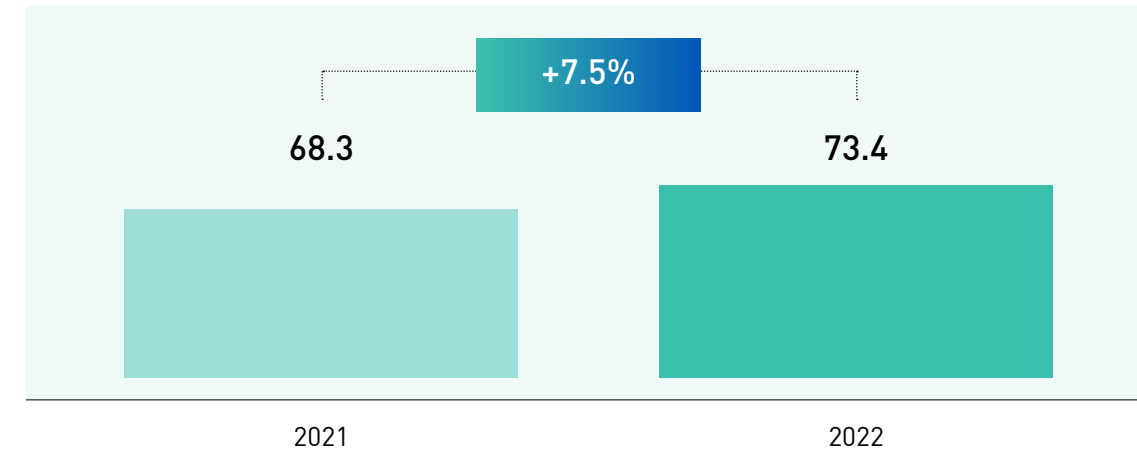
In comparison to the previous year, our company experienced a notable increase in revenues of \$MM 15.6, equivalent to 14,8%. This surge can be mainly attributed to efficiently managed increased volumes. Consequently, this led to a substantial growth in storage services, vessel and truck operations.

Revenues in \$MM



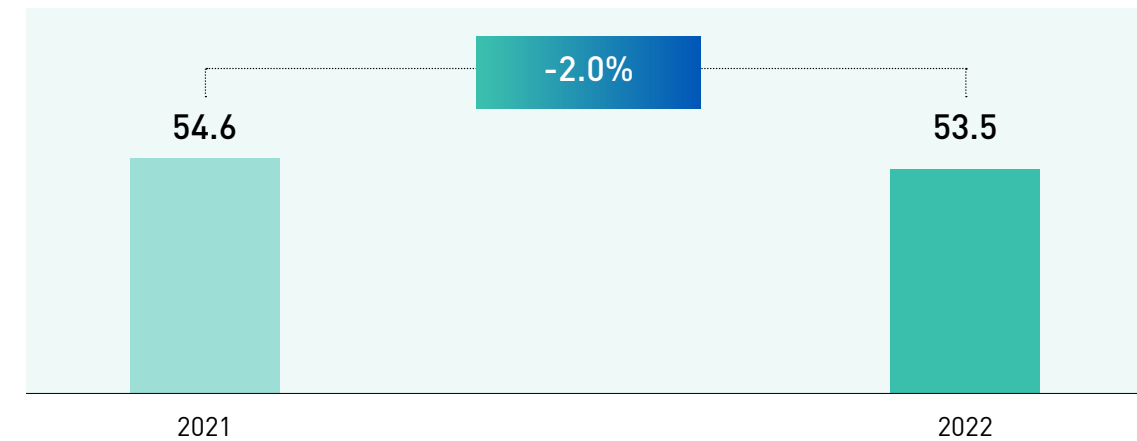
Our EBITDA exhibited robust growth, increasing by 7.5% and reaching a total of \$MM 73.4, compared to \$MM 68.3 million in the previous year. This expansion can be attributed mainly to augmented revenues from OTAMERICA.

EBITDA in \$MM



OTAMERICA's EBT experienced a marginal decline of approximately 2%. This decrease is primarily a result of the previously mentioned EBITDA impacts and some financial and foreign exchange losses across various countries.

EBT in \$MM



Our revenues in 2022 were driven by a range of products and services, reflecting the strength and diversity of our portfolio:

- **Oil products:** We recorded substantial sales in Oil Products, with significant contributions from various regions.

- INTRODUCTION
- COMPANY PROFILE
- SUSTAINABILITY & ESG STRATEGY
- ENVIRONMENT STEWARSHIP
- SOCIAL
- GOVERNANCE**
- ABOUT THIS REPORT
- ANNEXES

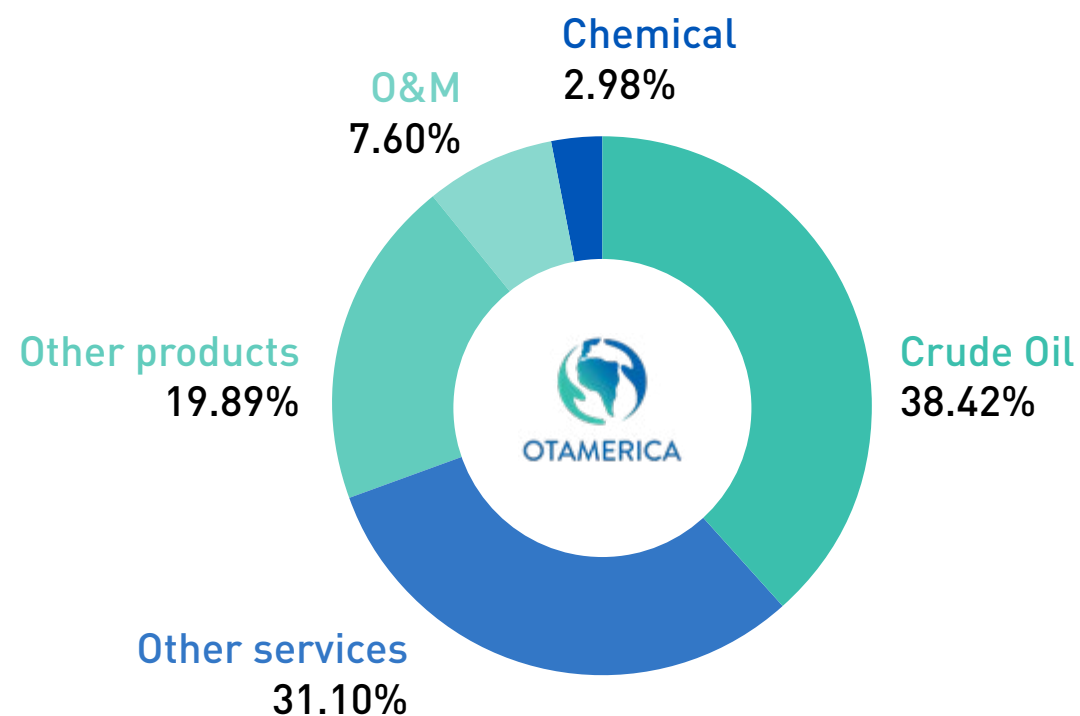
- **Other services:** We witnessed noteworthy sales in other services like tug services, mooring/unmooring services, wharfage fee and blending.
- **Operations and Maintenance (O&M) services:** In terms of Operations and Maintenance, we achieved substantial sales figures, reflecting a commitment to efficient service delivery.
- **Chemical products:** Our endeavors in Chemical products were marked by a successful partnership with key industry players.
- **Other products:** In addition to our main product lines, our diversification efforts yielded positive results, showcasing the benefits of a well-rounded portfolio.

Revenues Split 2022

Our targets for 2023 include:

- Consider ESG criteria in both existing and new areas of business.
- Develop projects in chemicals, refrigerated gases and clean energies while fostering innovative ideas to ensure future profitability.

During 2022, we received no financial assistance from national, provincial, or municipal governments, whether through tax benefits, grants, subsidies, exemptions, or other financial benefits.



Value generation and distribution

In 2022, OTAMERICA generated 161,75 \$MM in economic value, of which 67% was distributed. The total value distributed was disbursed primarily in payments to suppliers. The total value distributed has increased, from 86.14 \$MM in 2021 to 109.15 \$MM in 2022.

OTAMERICA’s accounting information is prepared in accordance with International Financial Reporting Standards (“IFRS”).

Supplier relations

The diversity of our company is reflected in the broad spectrum of our suppliers, ranging from vendors of technical equipment for our operational sites to office equipment suppliers. We treat our suppliers with respect, maintain an honest relationship with everyone involved in the business processes, and strive to establish a long-term cooperative partnership. For us, this means not only acting responsibly at our premises, but along the entire supply chain.

Internal supplier lists increase transparency in the quality and performance of our business partners, with the intention of providing our customers with excellent services and products. At OTAMERICA, an integrated contractor management program has been in place since 2014.

During 2022, we continued to prequalify all operations, maintenance, and repair contractors as well as all engineering, procurement, and construction (EPC) vendors, which includes a financial assessment as well as an assessment of Health, Safety, Security and Environment (HSSE) compliance for safety and environment. This contractor prequalification is carried out every two years, and site performance evaluations are completed following API 2220 standard.

Proportion of spending on local suppliers

Purchase volume	Local supplier*		International supplier		Total	
	\$M	%	\$M	%	\$M	%
Total Latin America	73,250	98.1	1,387	1.9	74,638	100

* We consider a company as "local supplier" if it provides services/products to terminals in the same country. \$M thousands of U.S. dollars.

Quantity of local suppliers

Purchase volume	Local supplier*		International supplier		Total	
	Q	%	Q	%	Q	%
Total Latin America	2,800	98.1	53	1.9	2,853	100

* We consider a company as "local supplier" if it provides services/products to terminals in the same country.

Enhance ESG integrity with business partners and suppliers

• We undertake regular risk assessments to identify, help mitigate, and prevent potential governance risks across our operations. This includes a risk-based approach to the acceptance and review of our business partners, which entails a rigorous background check prior to entering into a relationship. Classified solutions, such as a third-party check system, vessel check system and a KPI and incident reporting system, allow us to identify, among others:

- Sanctions and embargo risks
- Money laundering exposure
- Specific country and corruption risks
- Human rights and supply chain risks

Further initiatives are planned by the Ethics & Compliance function in 2023 to ensure compliance with environmental and human rights standards in our supply chain. For example, a supplier code of conduct is under development, to be rolled out in the vendor qualification process in 2024. We are also looking into high-risk supply chain issues, such as human rights and labor conditions, to be made subject to audits or third-party checks.

OTAMERICA's suppliers and contractors must have adopted best practices and the highest ethical standards, including but not limited to, environmental management and sustainable health and safety measures.



INTRODUCTION

COMPANY PROFILE

SUSTAINABILITY
& ESG STRATEGY

ENVIRONMENT
STEWARSHIP

SOCIAL

GOVERNANCE

ABOUT THIS REPORT

ANNEXES

About this report

GRI 2-1, 2-2, 2-3, 2-4, 2-5, 2-23, 2-29

This is our first Sustainability Report as OTAMERICA. It provides an overview of our sustainability ambition, focus areas and actions in 2022. This report has been prepared in accordance with Global Reporting Initiative (GRI) Standards and also shares our contribution to the UN Sustainable Development Goals.

Unless specifically indicated, the data included in this report belongs to the terminals that are operated and managed 100% by OTAMERICA, that is, the 5 Terminals of the joint venture with TDP in Peru (Callao, Supe, Salaverry, Chimbote and Eten) that are operated by our joint venture partner Unna Energy, are excluded. Also excluded is the Puerto Bahía terminal in Cartagena, Colombia, which is operated by Sociedad Portuaria Puerto Bahía. Both companies have their own sustainability, safety and reporting policies See p.55 - Corporate Governance chapter and Our Terminals annex for a comprehensive list.

This report has not received external assurance and covers CY 2022: 01/01/2022 to 12/31/22. In some cases, performance information for these operating entities in 2021 is also provided for comparison.

All financial information is presented in (\$) U.S. dollars. Foreign currencies have been converted to US Dollars at the 2022 average exchange rates.

As this is our first Sustainability Report, there are no restatements of information.

This report is available in English, Spanish and Portuguese, all in digital format only.

For any questions or comments, please email us at media-communications@otamerica.com

For more information about OTAMERICA, visit our [website](#)



INTRODUCTION

COMPANY PROFILE

SUSTAINABILITY
& ESG STRATEGY

ENVIRONMENT
STEWARSHIP

SOCIAL

GOVERNANCE

ABOUT THIS REPORT

ANNEXES

Annexes

GRI CONTENT INDEX

INTRODUCTION

COMPANY PROFILE

SUSTAINABILITY & ESG STRATEGY

ENVIRONMENT STEWARSHIP

SOCIAL

GOVERNANCE

ABOUT THIS REPORT

ANNEXES

Statement of use

Oiltanking Amercia has reported the information cited in this GRI content index for the period 01/01/22 to 31/12/22 with reference to the GRI Standards.

GRI 1 used

GRI 1: Foundation 2021

GRI STANDARD	DISCLOSURE	LOCATION
GRI 2: General Disclosures 2021	2-1 Organizational details	56
	2-2 Entities included in the organization's sustainability reporting	56
	2-3 Reporting period, frequency and contact point	56
	2-4 Restatements of information	56
	2-5 External assurance	56
	2-6 Activities, value chain and other business relationships	9
	2-7 Employees	29
	2-8 Workers who are not employees	29
	2-9 Governance structure and composition	47
	2-10 Nomination and selection of the highest governance body	47
	2-11 Chair of the highest governance body	47
	2-12 Role of the highest governance body in overseeing the management of impacts	47
	2-13 Delegation of responsibility for managing impacts	47
	2-14 Role of the highest governance body in sustainability reporting	47
	2-15 Conflicts of interest	48
	2-16 Communication of critical concerns	48
	2-20 Process to determine remuneration	29
	2-22 Statement on sustainable development strategy	7
	2-23 Policy commitments	13

INTRODUCTION
COMPANY PROFILE
SUSTAINABILITY & ESG STRATEGY
ENVIRONMENT STEWARSHIP
SOCIAL
GOVERNANCE
ABOUT THIS REPORT
ANNEXES

GRI STANDARD	DISCLOSURE	LOCATION
GRI 2: General Disclosures 2021	2-24 Embedding policy commitments	48
	2-26 Mechanisms for seeking advice and raising concerns	48
	2-27 Compliance with laws and regulations	48
	2-28 Membership associations	15
	2-29 Approach to stakeholder engagement	15
	2-30 Collective bargaining agreements	29
GRI 3: Material Topics 2021	3-1 Process to determine material topics	15
	3-2 List of material topics	15
Economic Impacts	3-3 Management of material topics	51
	201-4 Financial assistance received from government	51
	204-1 Proportion of spending on local suppliers	51
Anti-corruption	3-3 Management of material topics	48
	205-1 Operations assessed for risks related to corruption	48
	205-3 Confirmed incidents of corruption and actions taken	48
Non competitive behavior	3-3 Management of material topics	48
	206-1 Legal actions for anti-competitive behavior, anti-trust, and monopoly practices	48
Freedom of association and Collective bargaining	3-3 Management of material topics	29
	2-30 Collective bargaining agreements	29
Water and Effluents	3-3 Management of material topics	24
	303-1 Interactions with water as a shared resource	24
	303-2 Management of water discharge-related impacts	24
	303-3 Water withdrawal	24
	303-4 Water discharge	24

INTRODUCTION
COMPANY PROFILE
SUSTAINABILITY & ESG STRATEGY
ENVIRONMENT STEWARSHIP
SOCIAL
GOVERNANCE
ABOUT THIS REPORT
ANNEXES

GRI STANDARD	DISCLOSURE	LOCATION
Biodiversity	3-3 Management of material topics	26
	304-1 Operational sites owned, leased, managed in, or adjacent to, protected areas and areas of high biodiversity value outside protected areas	26
Climate adaptation, resilience and transition GHG Emissions Air Emissions	3-3 Management of material topics	23
	302-1 Energy consumption within the organization	23
	302-3 Energy intensity	23
	302-4 Reduction of energy consumption	23
	305-1 Direct (Scope 1) GHG emissions	23
	305-2 Energy indirect (Scope 2) GHG emissions	23
	305-4 GHG emissions intensity	23
	305-5 Reduction of GHG emissions	23
Waste	3-3 Management of material topics	25
	306-1 Waste generation and significant waste-related impacts	25
	306-2 Management of significant waste-related impacts	25
	306-3 Waste generated	25
	306-4 Waste diverted from disposal	25
	306-5 Waste directed to disposal	25
Supplier Environmental Assessment	3-3 Management of material topics	51
	308-1 New suppliers that were screened using environmental criteria	51
Asset Integrity and Critical Incident	3-3 Management of material topics	17
	306-3 Significant spills (2016)	17

INTRODUCTION
COMPANY PROFILE
SUSTAINABILITY & ESG STRATEGY
ENVIRONMENT STEWARSHIP
SOCIAL
GOVERNANCE
ABOUT THIS REPORT
ANNEXES

GRI STANDARD	DISCLOSURE	LOCATION
Employment Practices	3-3 Management of material topics	21
	401-1 New employee hires and employee turnover	21
	401-2 Benefits provided to full-time employees that are not provided to temporary or part-time employees	21
	404-1 Average hours of training per year per employee	32
	404-2 Programs for upgrading employee skills and transition assistance programs	32
	404-3 Percentage of employees receiving regular performance and career development reviews	32
Occupational Health and Safety	3-3 Management of material topics	33
	403-1 Occupational health and safety management system	33
	403-2 Hazard identification, risk assessment, and incident investigation	33
	403-3 Occupational health services	33
	403-4 Worker participation, consultation, and communication on occupational health and safety	33
	403-5 Worker training on occupational health and safety	33
	403-6 Promotion of worker health	33
	403-7 Prevention and mitigation of occupational health and safety impacts directly linked by business relationships	33
	403-8 Workers covered by an occupational health and safety management system	33
	403-9 Work-related injuries	33
403-10 Work-related ill health	33	
Non Discrimination and Equal Opportunity	3-3 Management of material topics	31
	405-1 Diversity of governance bodies and employees	31, 47
	406-1 Incidents of discrimination and corrective actions taken	31
Local Communities	3-3 Management of material topics	40
	413-1 Operations with local community engagement, impact assessments, and development programs	40

GLOSSARY

ABBREVIATIONS

- API = American Petroleum Institute
- CSR = corporate social responsibility
- ESG = environmental, social and governance
- GHG = greenhouse gas
- GJ = gigajoules
- GRI = Global Reporting Initiative
- GDDSCA = German Due Diligence Supply Chain Act
- HR = Human Resources
- HSSE = Health, Safety, Security and Environment
- HAZID = (Hazard Identification)
- HAZOP = (Hazardous Operation)
- IPCC = Intergovernmental Panel on Climate Change
- ISO = International Organization for Standardization
- KPI = key performance indicator
- LOPC = loss of primary containment
- LPG = liquefied petroleum gas
- LTI = lost time injuries causing an employee to miss work days
- LTIR = lost time injuries rate: LTI per 1 million work hours
- LWD = lost work days
- M&A = mergers and acquisitions
- M&B = Marquard & Bahls AG
- OSRL = Oil Spill Response Limited
- PEAR = people, environment, asset and reputation
- PPE = personal protective equipment
- RWC = restricted work case: an injury that prevents a worker from performing their routine functions but allows them to perform alternative functions
- TP = throughput, the volume of product transferred through terminal logistics (cbm)
- TRI = total recordable injuries: any incident that leads to death, days away from work, restricted work or transfer to another job, medical treatment beyond first aid or loss of consciousness
- TRIR = total recordable injuries rate; TRI per 1 million work hours
- UN SDGs = United Nations Sustainable Development Goals
- VOC = volatile organic compound

MEASUREMENTS AND UNITS

- CH₄ = methane
- CO₂ = carbon dioxide
- CO₂e = carbon dioxide equivalent
- Cbm = cubic meter
- Km = one kilometer, which equals approximately 0.621371 miles.
- km² = one square kilometer, which equals approximately 247.1 acres.
- m³ = one cubic meter.
- l = one litre, equivalent to 0.001 cubic meters.
- MM = means one million
- N₂O = nitrous oxide
- \$ = U.S. dollars, the lawful currency of the United States of America
- \$M = thousand U.S. dollars.
- \$MM = million U.S. dollars.
- Tn, ton or t = metric ton (1,000 kg) or tonne
- tnCO₂e = Metric Tons of carbon dioxide equivalent



OUR TERMINALS

Country	Terminal / Company name	Tank Capacity (cbm)	Tanks	Access Types	Products	Services
Argentina	Oiltanking Ebytem S.A., Puerto Rosales + 44 km pipeline	479,994	18	Vessels, Tank Trucks, Pipeline	Crude oil	Pipeline connections to refineries, Tank-to-tank transfer, Vessel loading and unloading, Truck loading and unloading, Truck weighing, Make & Break Bulk, Blending services, and Fiscal warehouse
Argentina	Oiltanking Ebytem S.A.	70,638	3	Tank Pipeline	Crude oil	Pipeline connections to refineries, Tank-to-tank transfer.
Brazil	Oiltanking Açú Serviços Ltda., Açú Petroleo	0	0	Vessels	Crude oil	Ship-to-ship transfer and Bonded warehouse
Brazil	Oiltanking Terminais Ltda., Vitória	70,144	23	Vessels, Barges, Rail Cars, Tank Trucks	Petroleum Products, Biofuels	Vessel loading and unloading, Barge loading and unloading, Railcar loading and unloading, Truck loading and unloading, Truck weighing, Make & Break Bulk, Blending services, and independent surveyor's lab on site
Colombia	Oiltanking Colombia S.A., Cartagena	36,71	23	Vessels, Barges, Tank Trucks, Pipeline, ISO Container	Petroleum Products, Chemicals, Petrochemicals, Biofuels	Pipeline distribution to offsite chemicals plants, vessel and barge loading and unloading, Truck and ISO containers loading and unloading, Drums and IBC filling, Nitrogen blanketing, Additivation services, Blending services.
Colombia	Oiltanking Colombia S.A., Puerto Bahía	424,16	8	Vessels, Barges, Tank Trucks	Petroleum Products, Crude Oil, Fuel Oil	Vessel loading and unloading, Barge loading and unloading, Truck loading and unloading, Nitrogen Blanketing, Additivation Services, Blending Services, Cross Docking Transfers, and Heating.
Mexico	Oiltanking México, S. de R.L. de C.V., Tuxpan	220,042	6	Vessels, Tank Trucks	Petroleum Products, Jet Fuel	Vessel unloading, Truck loading and unloading, Additivation Services, Blending Services, and Tank to Tank Transfers.
Panama	Colon Oil and Services S.A., COASSA	120,409	8	Vessels, Barges, Tank Trucks	Petroleum Products, Fuel Oil	Vessel loading and unloading, Ship to ship transfer via shoreline, Barge loading and unloading, Truck loading and unloading, Blending Services, and Tank to Tank Transfers.
Peru	Logística de Químicos del Sur S.A.C. - LQS, Matarani	9,204	6	Vessels	Chemicals	Vessel unloading, Truck loading, and Vapor recovery
Peru	OTAS (O&M for the off-shore platform), Pisco	0	0		Petroleum Products, Biofuels, LPG	Vessel loading and unloading and Vapor recovery or balancing

INTRODUCTION

COMPANY PROFILE

SUSTAINABILITY & ESG STRATEGY

ENVIRONMENT STEWARSHIP

SOCIAL

GOVERNANCE

ABOUT THIS REPORT

ANNEXES

Country	Terminal / Company name	Tank Capacity (cbm)	Tanks	Access Types	Products	Services
Peru	Terminales del Perú, Callao	267,415	36	Vessels, Rail Cars, Tank Trucks	Petroleum Products, Fuel Oil, Jet Fuel, Biofuels, LPG	Railcar loading and unloading, Blending services, Additive injection, Commingled and dedicated tanks, Vessel loading and unloading, and Truck loading and unloading
Peru	Terminales del Perú, Eten	63,396	13	Vessels, Tank Trucks	Petroleum Products, Biofuels	Blending services, Additive injection, Filtering, Vessel unloading, and Truck loading and unloading
Peru	Terminales del Perú, Chimbote	49,311	12	Vessels, Tank Trucks	Petroleum Products, Biofuels	Blending services, Additive injection, Vessel unloading, and Truck loading and unloading
Peru	Terminales del Perú, Supe	30,598	10	Vessels, Tank Trucks	Petroleum Products, Biofuels	Blending services, Additive injection, Commingled and dedicated tanks, Vessel unloading, and Truck loading and unloading
Peru	Terminales del Perú, Salaverry	44,432	11	Vessels, Tank Trucks	Petroleum Products, Biofuels	Blending services, Additive injection, Vessel unloading, and Truck loading and unloading





OTAMERICA

Sustainability Report
2022